

***Yukon Focused Gold Explorer
Hyland Gold Project Technical Presentation***

Cautionary Note Regarding Forward-Looking Information: Information set forth in this document may contain forward-looking statements under applicable securities law. Forward-looking statements are statements that relate to future, not past, events. In this context, forward-looking statements often address a company's expected future business and financial performance, and often contain words such as "anticipate", "believe", "plan", "estimate", "expect", and "intend", statements that an action or event "may", "might", "could", "should", or "will" be taken or occur, or other similar expressions. By their nature, forward-looking statements involve known and unknown risks, uncertainties and other factors which may cause our actual results, performance or achievements, or other future events, to be materially different from any future results, performance or achievements expressed or implied by such forward-looking statements. Such factors include, among others, the following risks: risks associated with project development; the need for additional financing; risks associated with mineral exploration; fluctuations in gold and commodity prices; title matters; environmental liability and insurance; reliance on key personnel; the potential for conflicts of interest among certain officers, directors or promoters with certain other projects; competition; dilution; the volatility of common share price and volume, and additional risks identified in the management discussion and analysis section of our financial statement or other reports and filings with the TSX Venture Exchange and applicable Canadian securities regulations. Forward-looking statements are made based on management's beliefs, estimates and opinions on the date that statements are made and the Company undertakes no obligation to update forward-looking statements if these beliefs, estimates and opinions or other circumstances should change. Investors are cautioned against attributing undue certainty to forward-looking statements. Additional information regarding the Hyland Gold property can be found in the technical report filed on SEDAR at www.sedar.com entitled: " Technical Report on the Hyland Gold Property", dated August 4, 2016. Banyan Gold Corp. expressly warns readers not to rely on the information herein for investment or other related purposes and refers the reader to a professional investment advisor regarding investment or related decisions respecting the securities of the Company.

Cautionary Note to U.S. Investors Concerning Estimates of Measured, Indicated and Inferred Resources: This presentation uses the terms "Measured", "Indicated" and "Inferred" Resources. U.S. investors are advised that while such terms are recognized and required by Canadian regulations, the Securities and Exchange Commission does not recognize them. "Inferred Resources" have a great amount of uncertainty as to their existence, and great uncertainty as to their economic and legal feasibility. It cannot be assumed that all or any part of an inferred resource will ever be upgraded to a higher category. Under Canadian rules, estimates of Inferred Resources may not form the basis of feasibility or other economic studies. U.S. investors are cautioned not to assume that all or any part of an Inferred Mineral Resource exists, or is economically or legally mineable.

Qualified Person

Paul D. Gray, P.Geo. is a "qualified person" within the meaning of such term as set forth in National Instrument 43-101 of the Canadian Securities Administrators, has verified and supervised the preparation of all of the scientific and technical information contained in this presentation.

Prospective Gold Belt

- Over 32 million ounces produced
- 60 million ounces in reserves and resources in these projects
- Numerous recent discoveries
- Under-explored gold belt

New Yukon Gold Rush

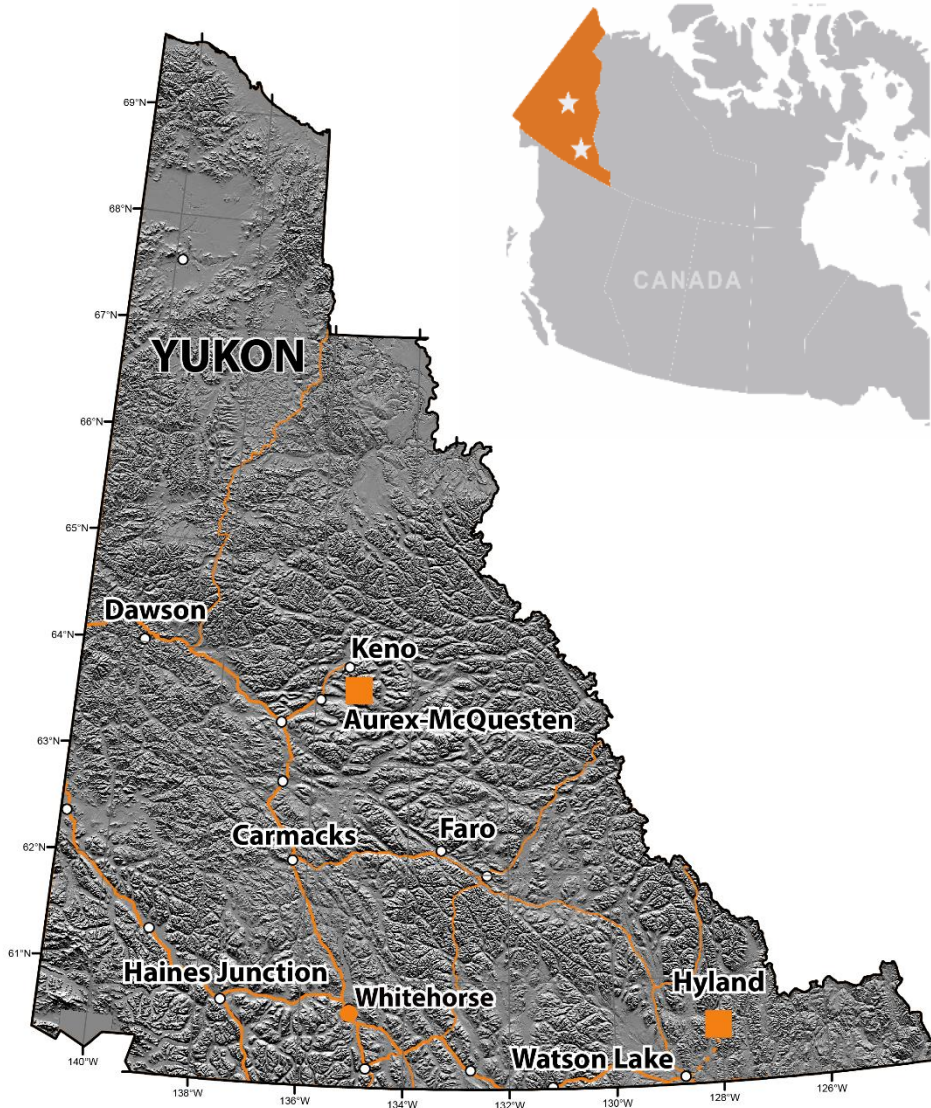
Recent investments by

- Goldcorp (Coffee - \$520M)
- Newmont (Goldstrike - \$35M)
- Barrick (Orion - \$50M)
- Agnico-Eagle
- Coeur

Development Stage Projects

- Victoria Gold is building the Eagle Gold Mine (200,000 oz Au/year)
- Keno Hill's Silver District - Alexco Resources



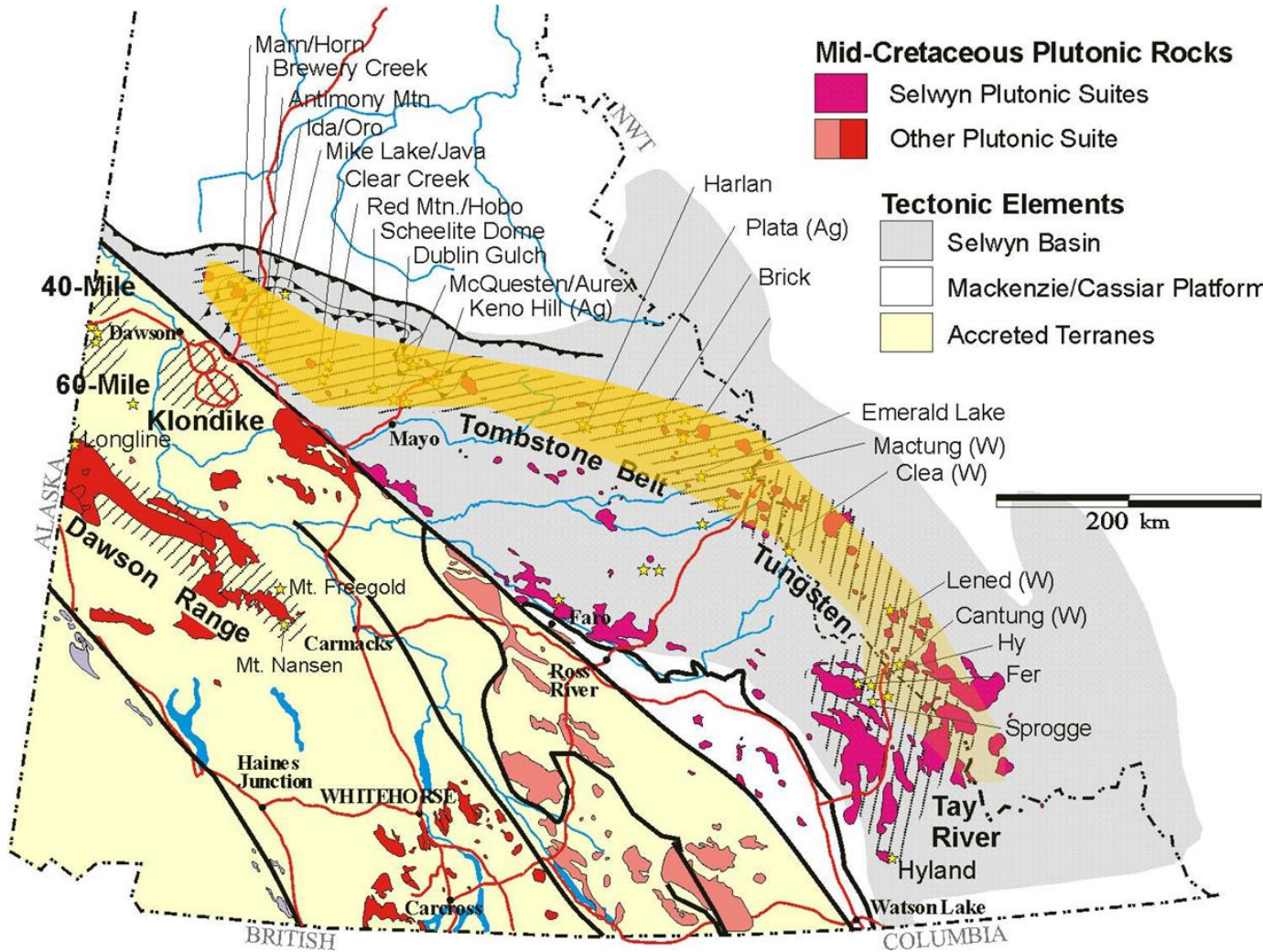


HYLAND GOLD PROJECT

- ~240K Indicated and 290K Inferred oz at 0.84 g/t AuEq (NI-43-101)
- Large regional resource potential (186km² land package)
- Deposit upgradable to +1M gold ounces
- Sediment-hosted, structurally controlled Gold + Silver mineralization
- Low development cost due to existing infrastructure – existing seasonal road access.
- Existing camp and equipment on-site
- 10 year Class III Mining Land Use Permit (April 2017)

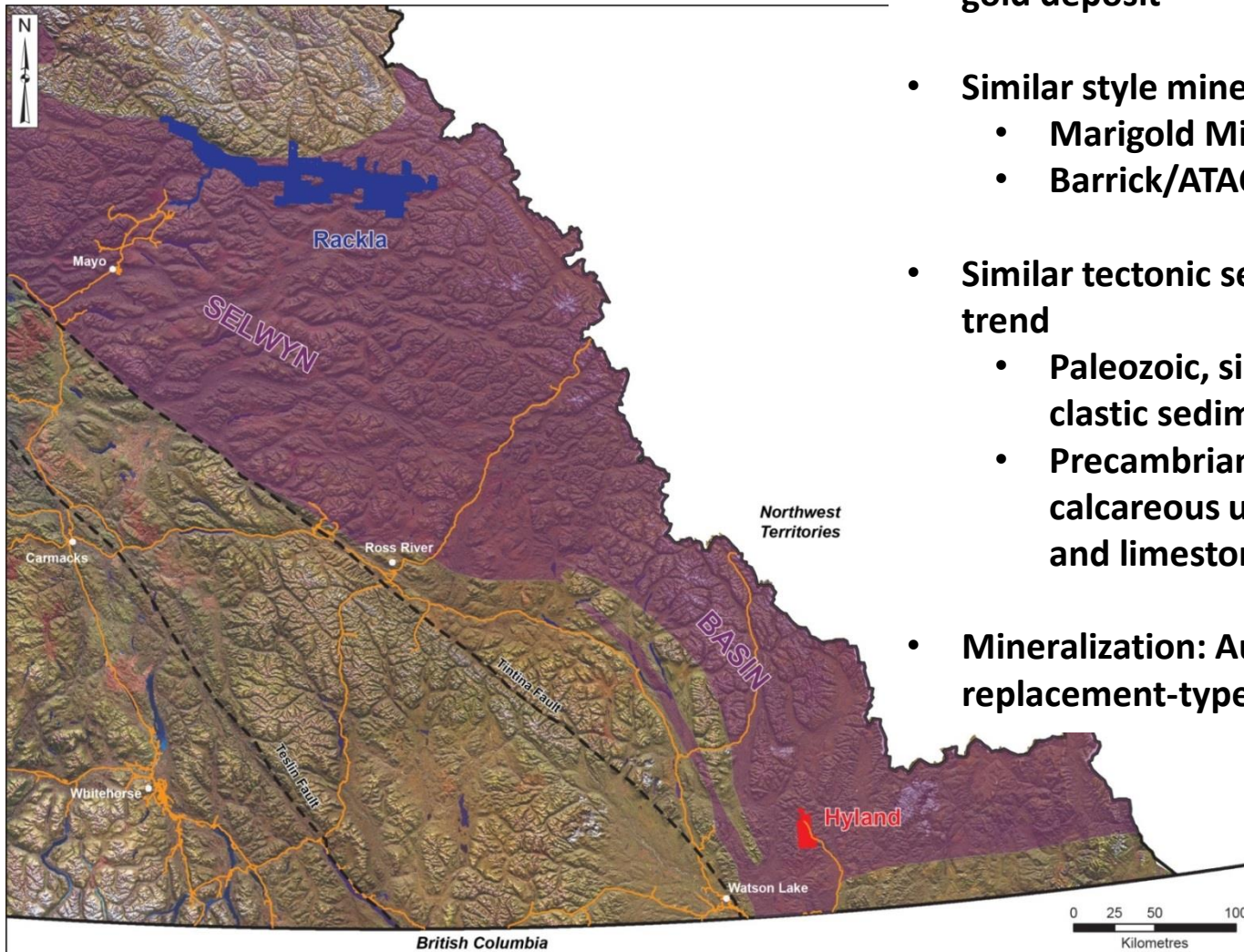
AUREX-MCQUESTEN GOLD PROJECT

- Prospective ground between 2 mine development stage projects (Eagle and Keno Hills)
- 9,230ha land package
- Large regional resource potential
- First time claim package consolidation
- Year round access

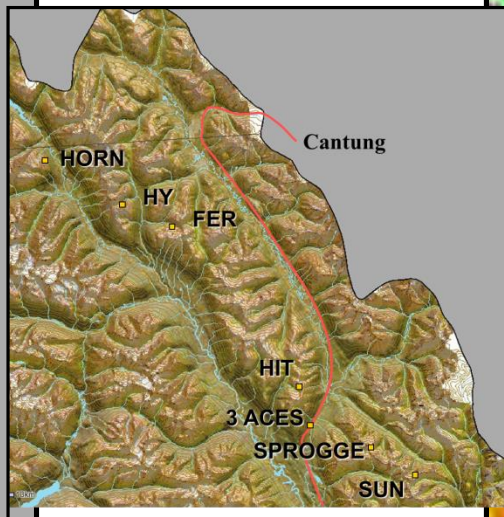
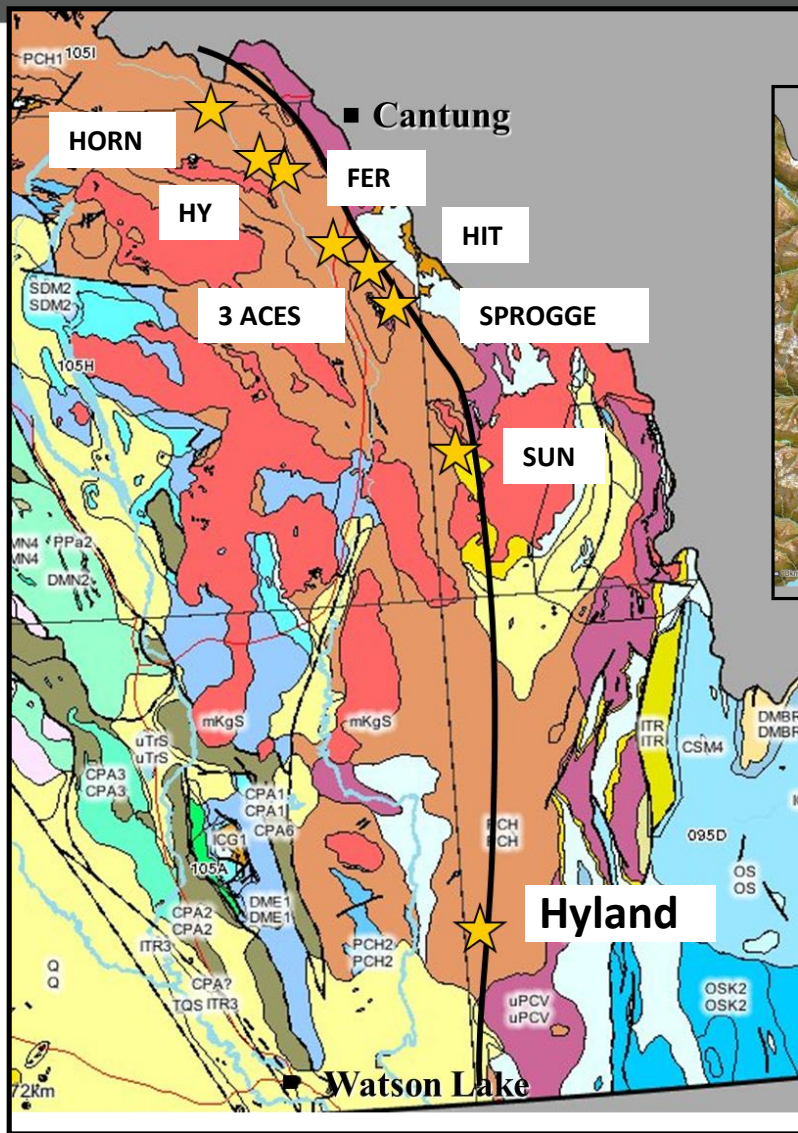


Selwyn Basin -

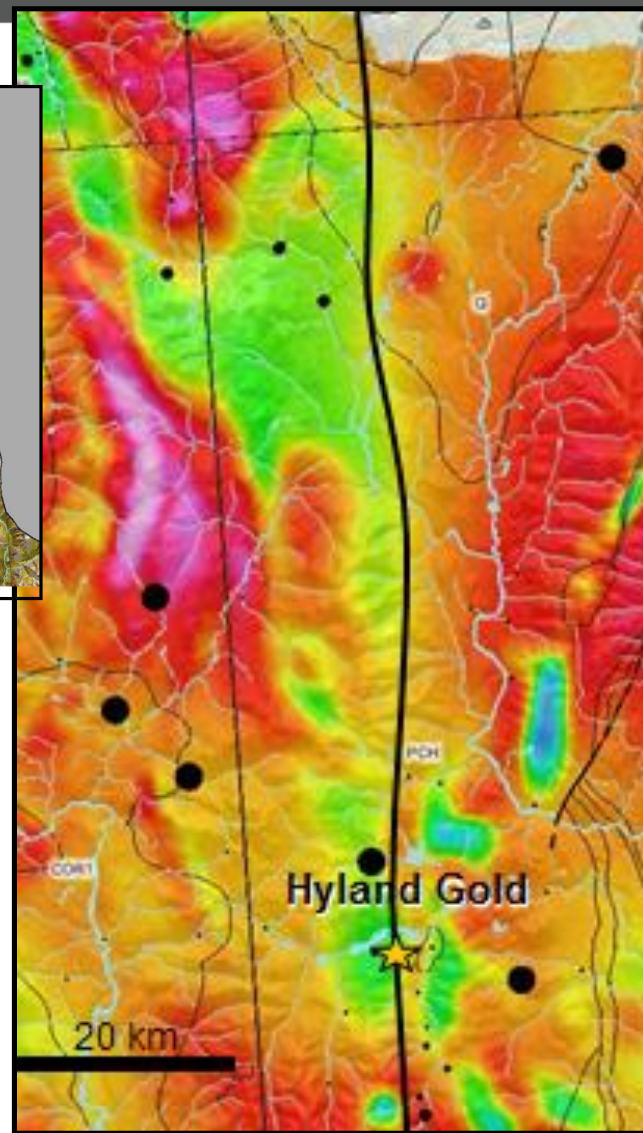
Late Precambrian to Mid-Devonian Tectonic Element Characterized by Deposition of Deep Water Marine Calcareous Sediments



- Sediment-hosted and structurally controlled gold deposit
- Similar style mineralization as
 - Marigold Mine in Nevada (SSR)
 - Barrick/ATAC.- Rackla Trend, Yukon
- Similar tectonic setting to Nevada's Carlin-trend
 - Paleozoic, silty shelf- carbonates and clastic sediments
 - Precambrian Hyland Group - Mixed calcareous units of quartzite, phyllites, and limestone
- Mineralization: Au stockwork and replacement-type precious/base metals styles

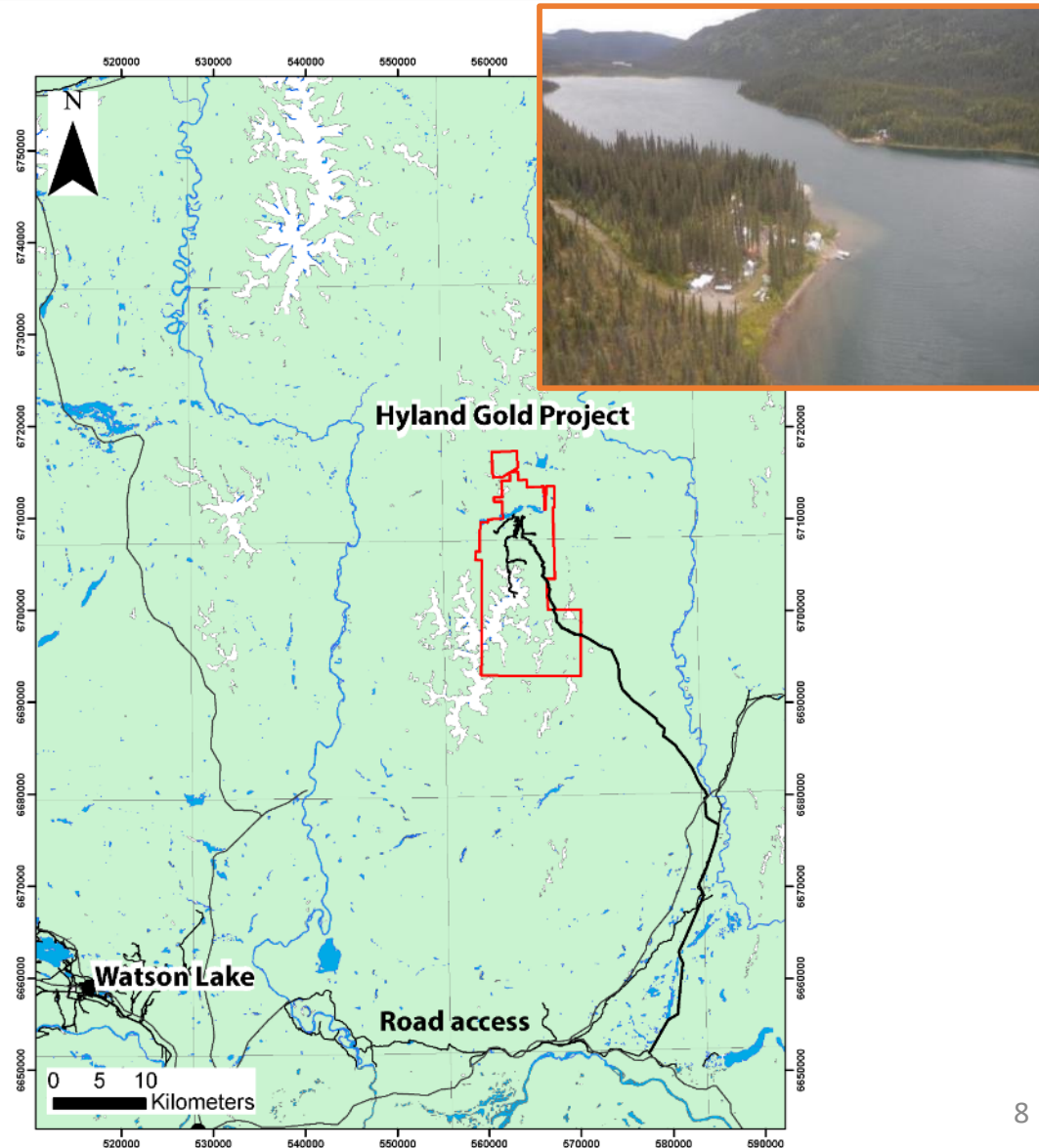


**Cretaceous
plutonism
included
calc-alkaline
intrusions
into the
sedimentary
package**



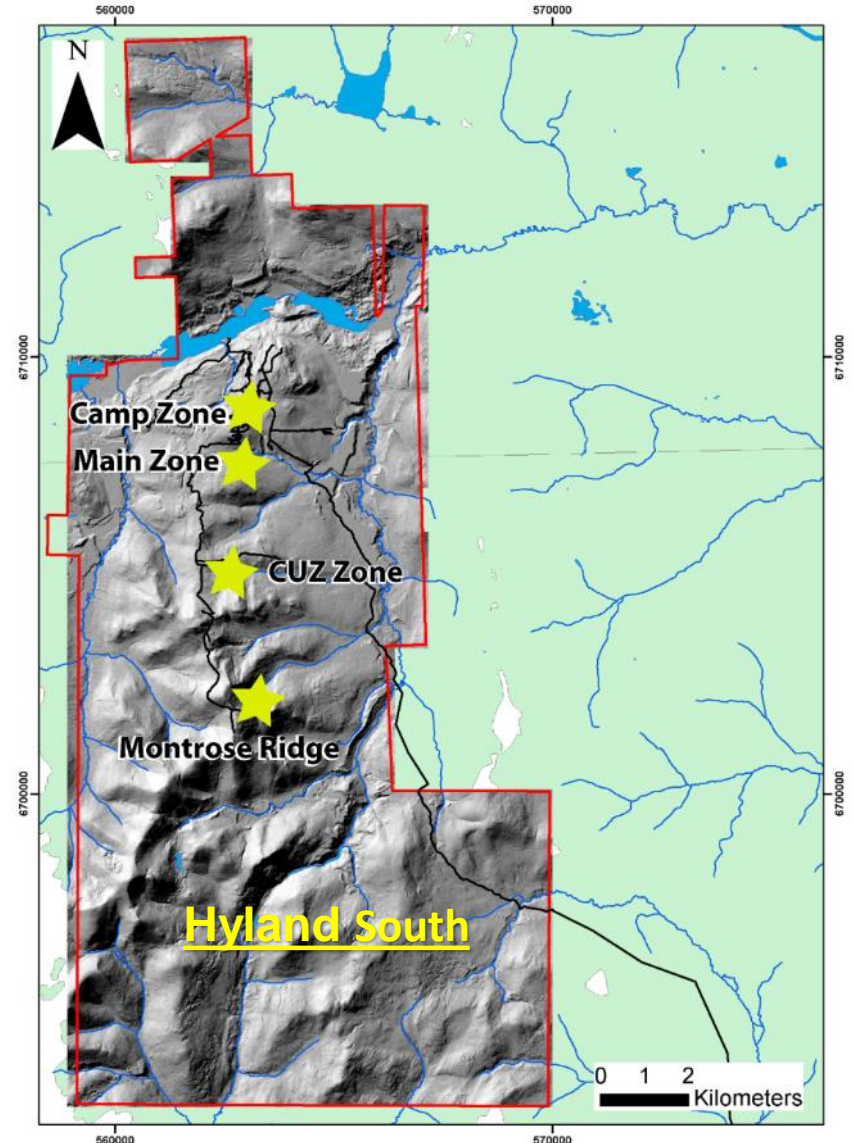
ACCESS & INFRASTRUCTURE

- Easily supported from Watson Lake 70 km away with population of 1,200
- 40 km of access road from public Coal River Road (used in winter)
- Access is by float plane in the summer and by road in winter
- 4 hour drive from Whitehorse to Watson
- Regularly scheduled flights between Whitehorse and Watson Lake (3 x week)

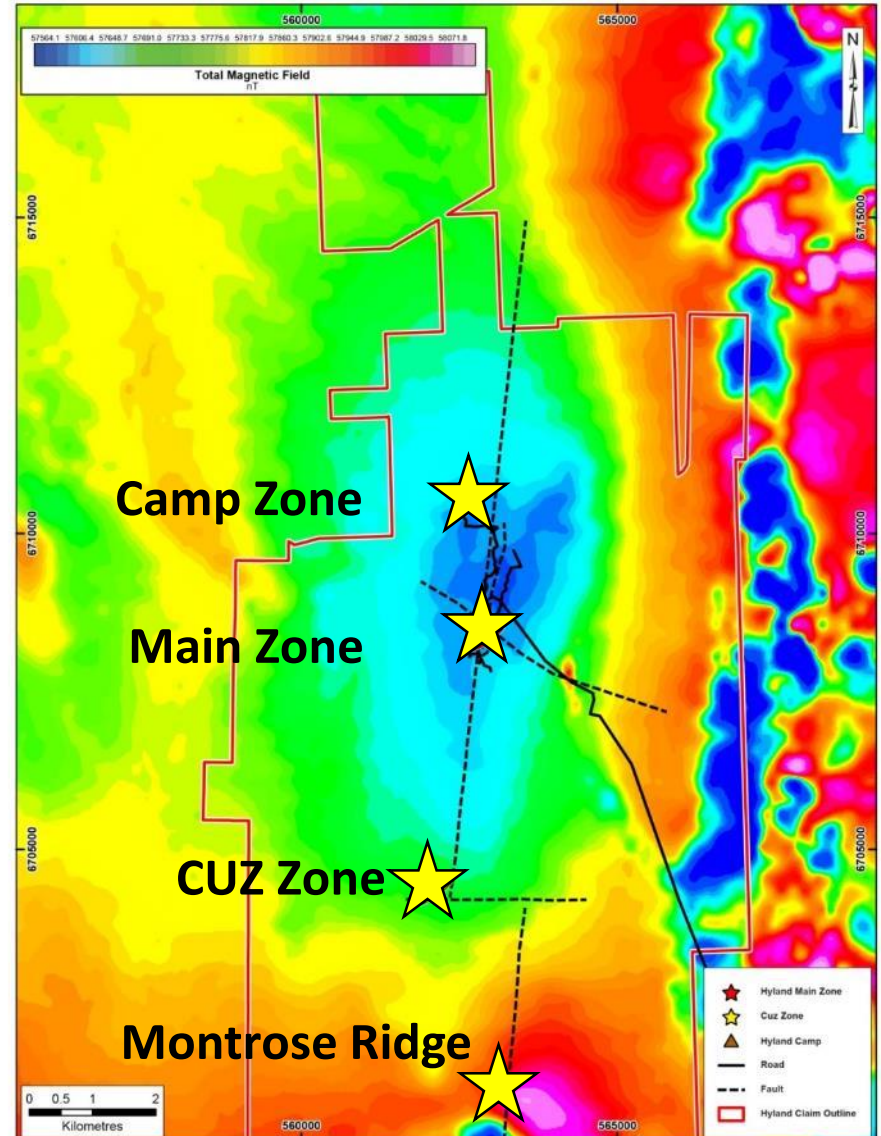


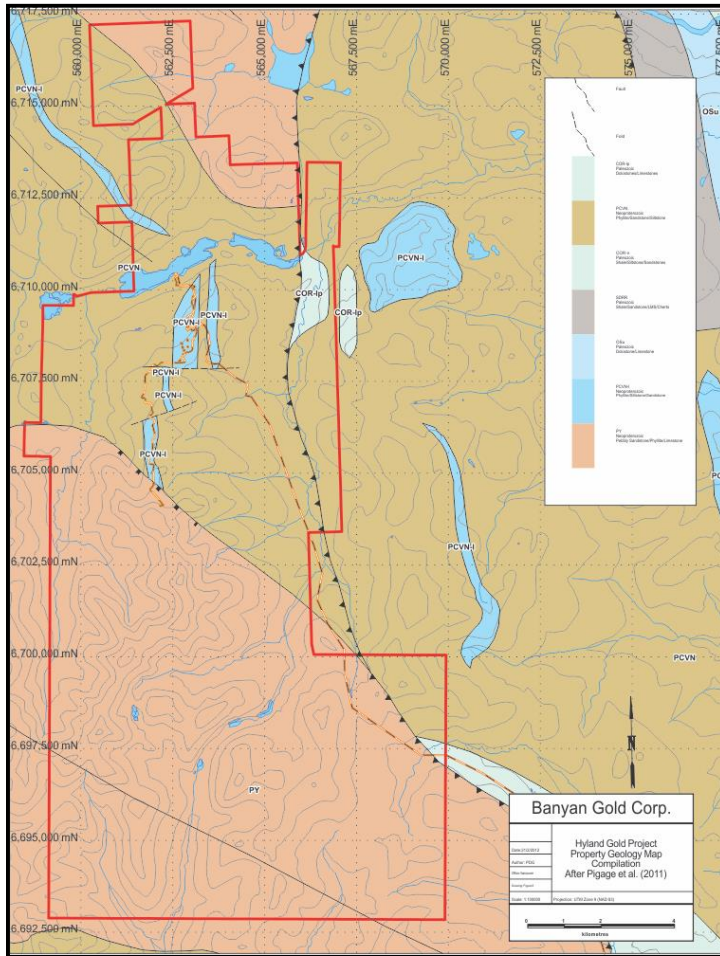
Regional Setting

- Property is 186 Km²
- Largely Unexplored >18km long well defined structural trend
 - Major N-S structural feature “Quartz Lake Corridor”
- Systematic exploration strategy
 - High potential at N-NW cross-cutting structures
 - Work from N to S, extending infrastructure (access)
- 4 Mineralized Zones and growing
 - Hyland South – on-going exploration focus



- Geophysics (Magnetics) suggests large regional mineralizing system
- Main Zone lies at Core of magnetic anomaly – reflects demagnetization of sedimentary rocks and defines large area of intense silicification
- Buried Cretaceous Intrusion driving heat and fluid flow
- Camp Zone to the northern end of the of magnetic low
- Structural Interpretations based on the high quality 1995 Newmont Airborne (Mag-Spec) Dataset



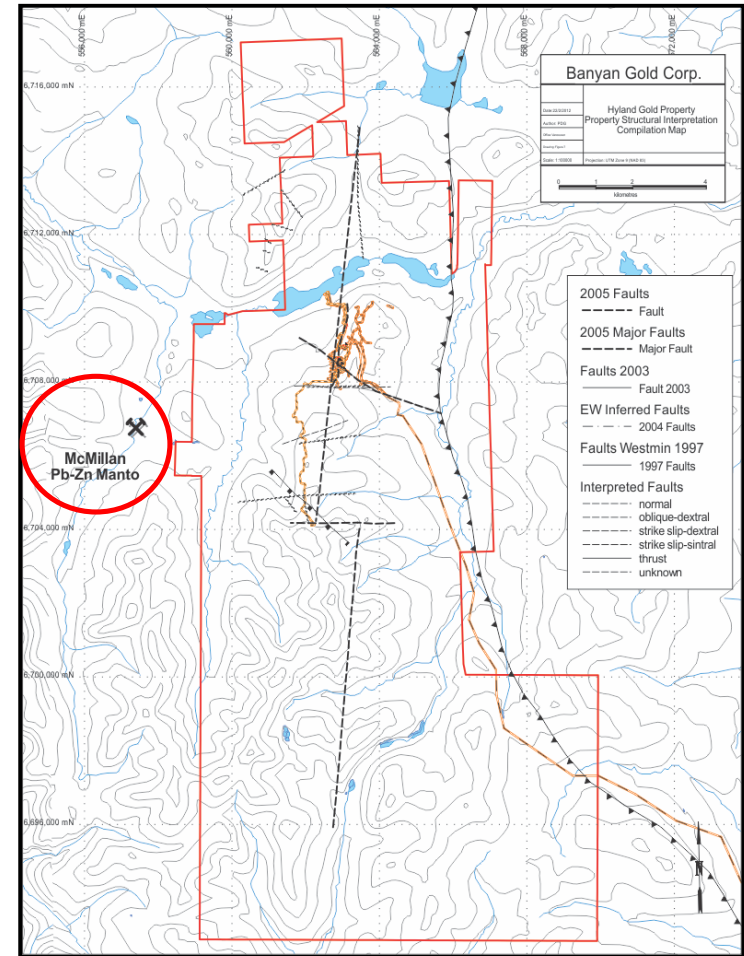


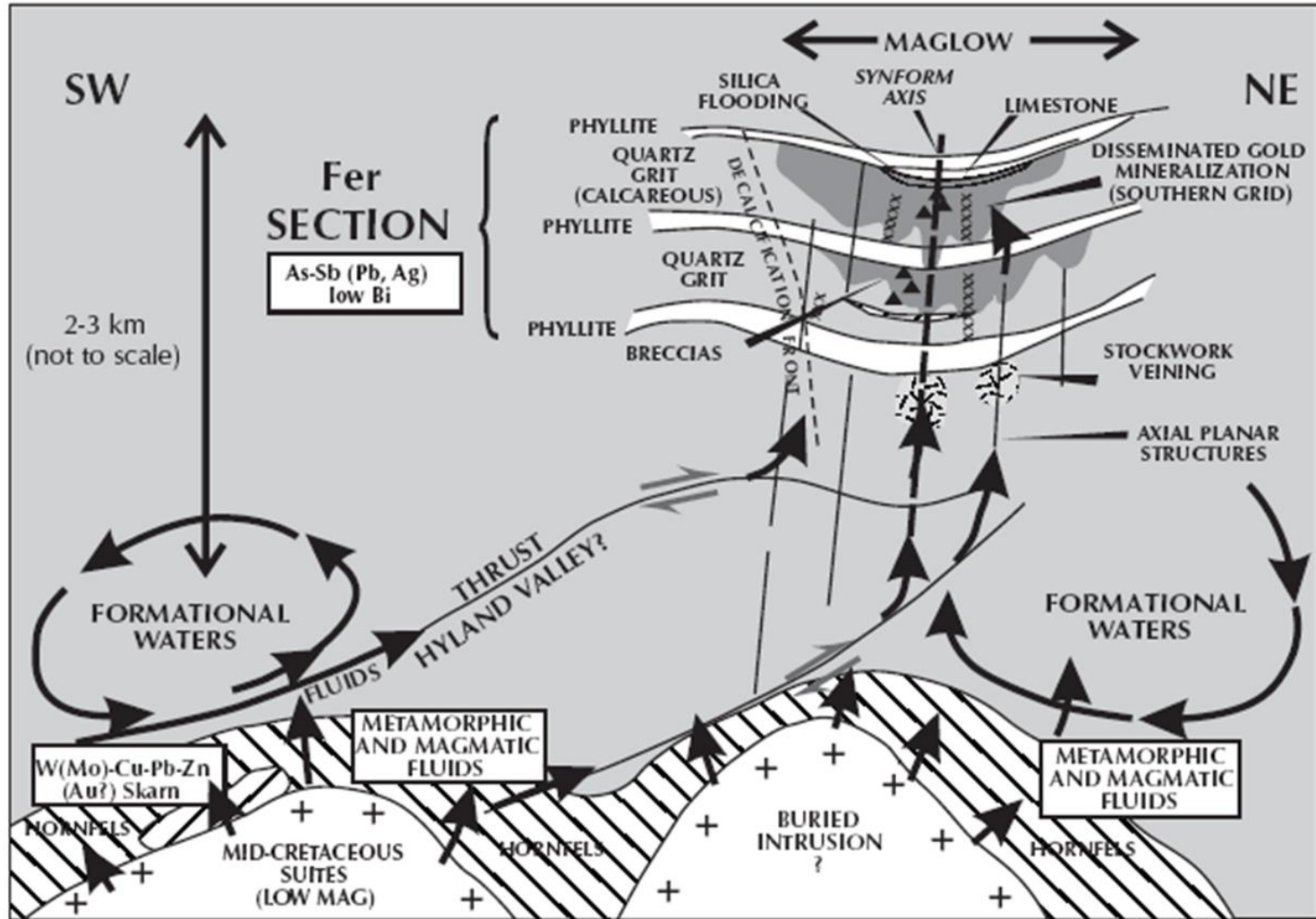
Quartz Lake
Lineament
Corridor

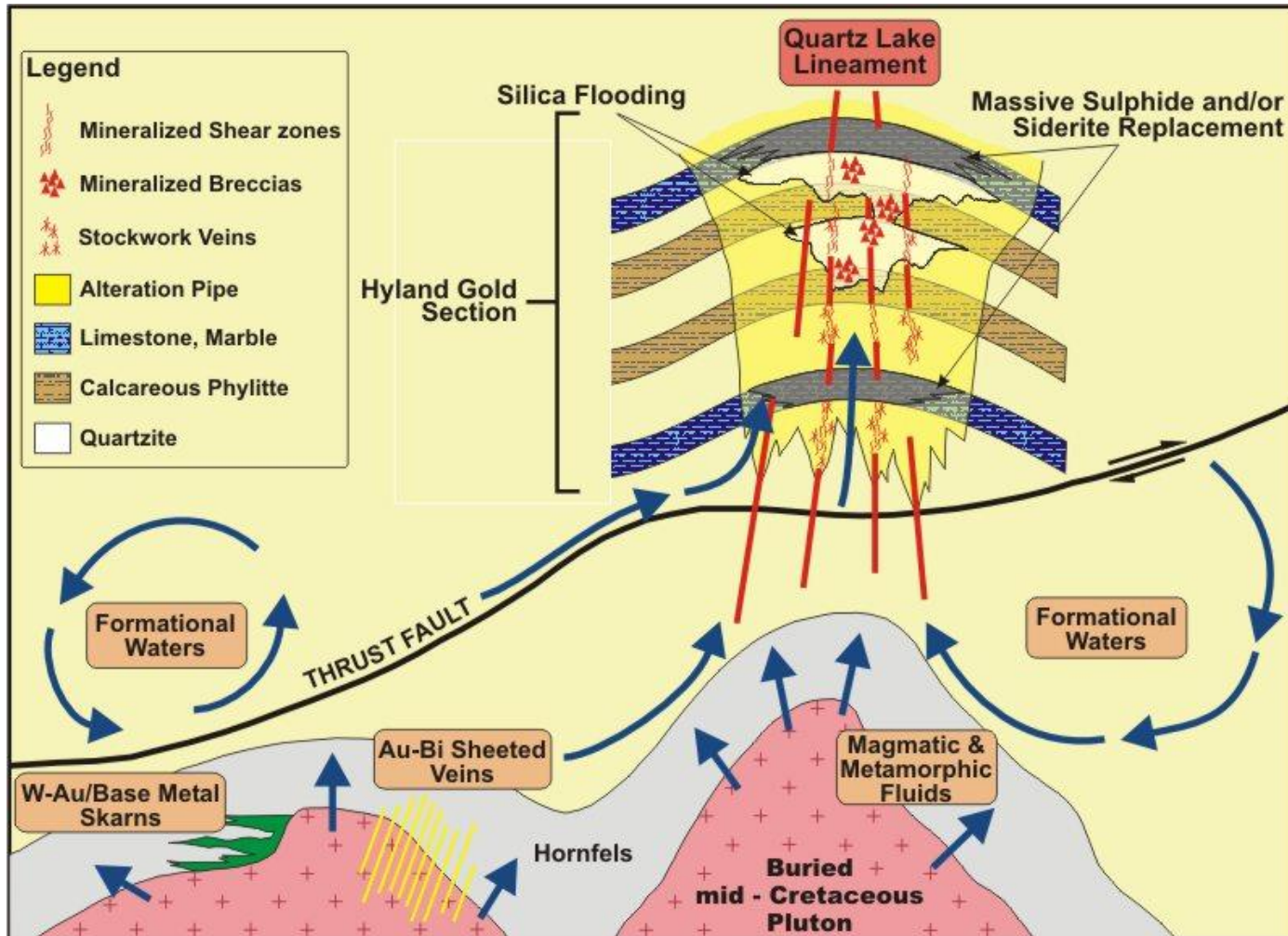
Major N-S
Structural
Feature

Cross-Cutting
Structures
Current
Exploration
Focus

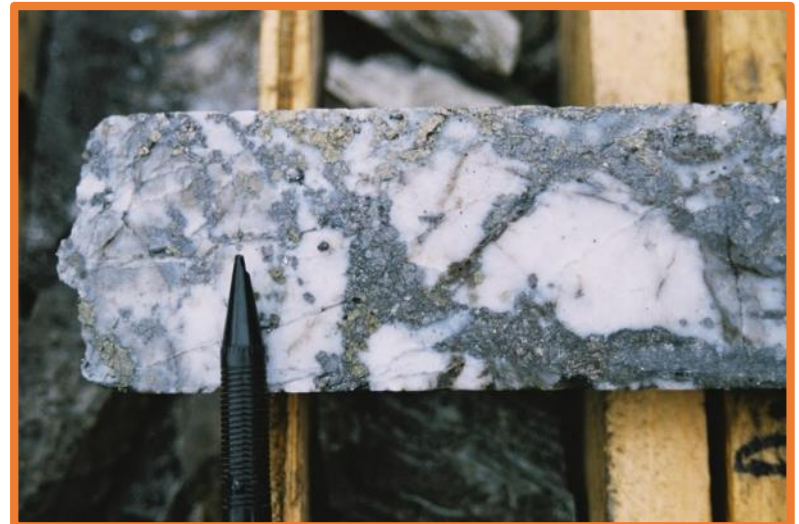
**Precambrian to Paleozoic mixed
calcareous metasedimentary package**







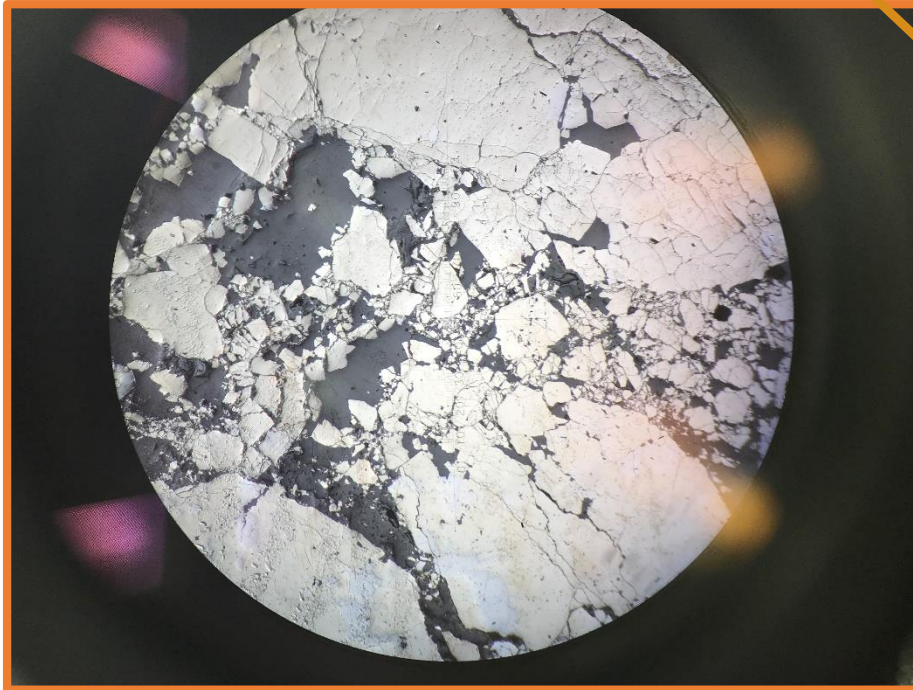
- Mineralization:
 - Occurs at intersection of N and NNW-trending faults
 - Is in quartz veins, quartzite breccia, and silicified phyllites
 - Stratabound and structurally controlled
 - Pyrite-arsenopyrite, chalcopyrite \pm sphalerite - tetrahedrite-pyrrhotite – bismuthinite
 - Gold known to occur in pyrite/arsenopyrite grain boundary

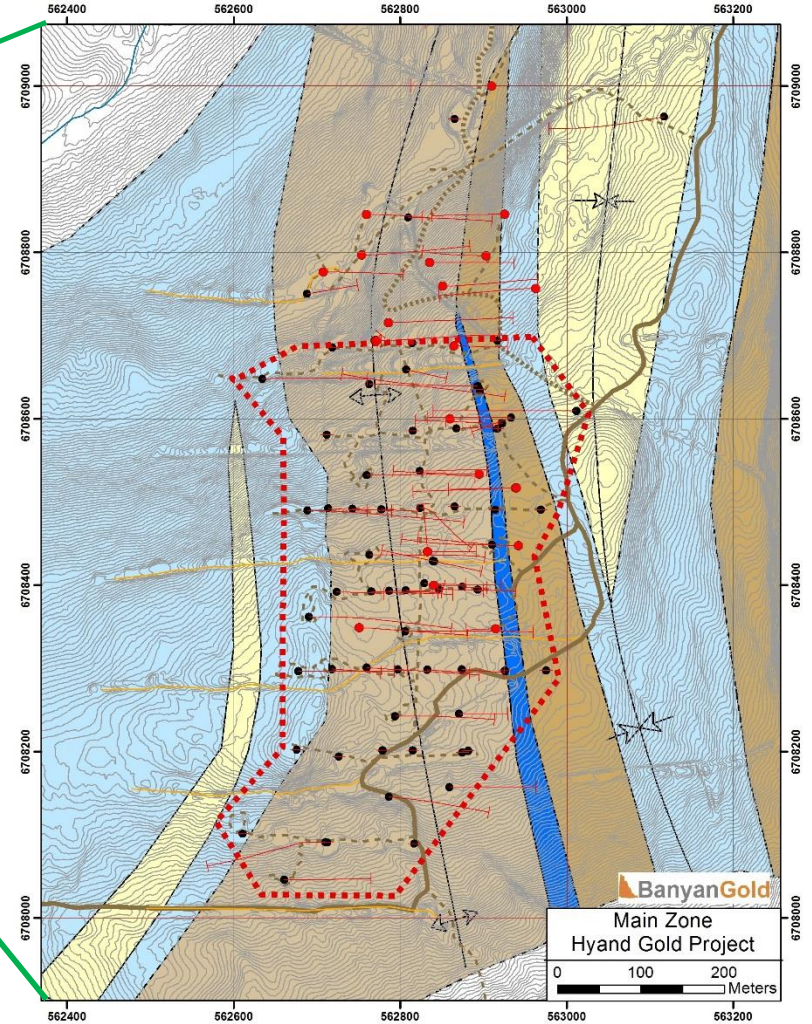
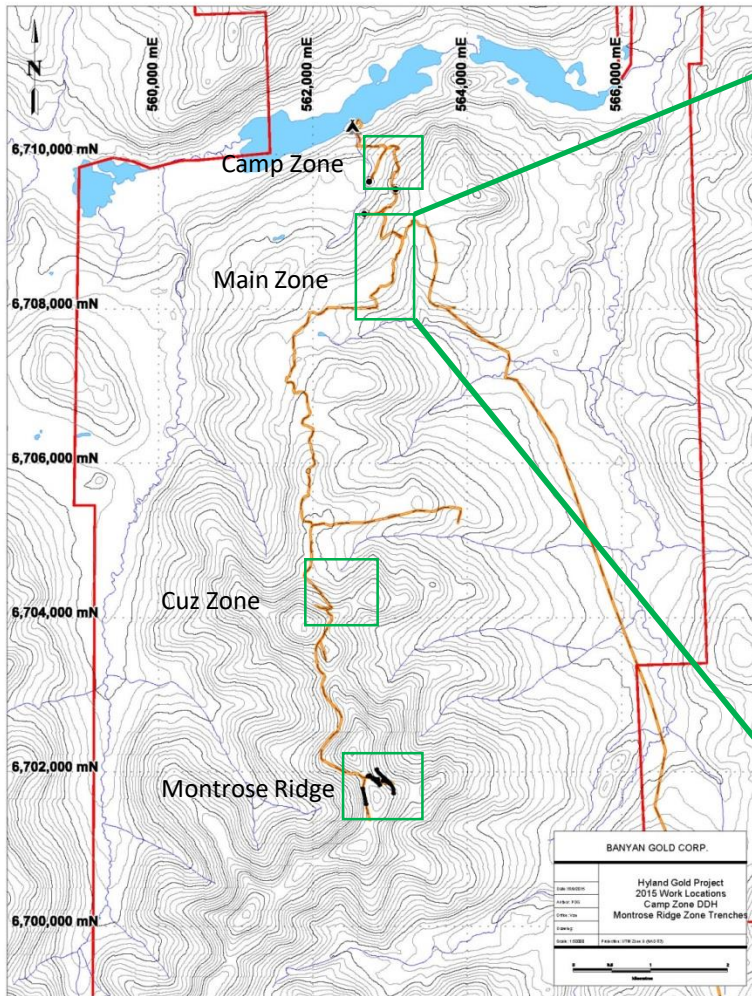


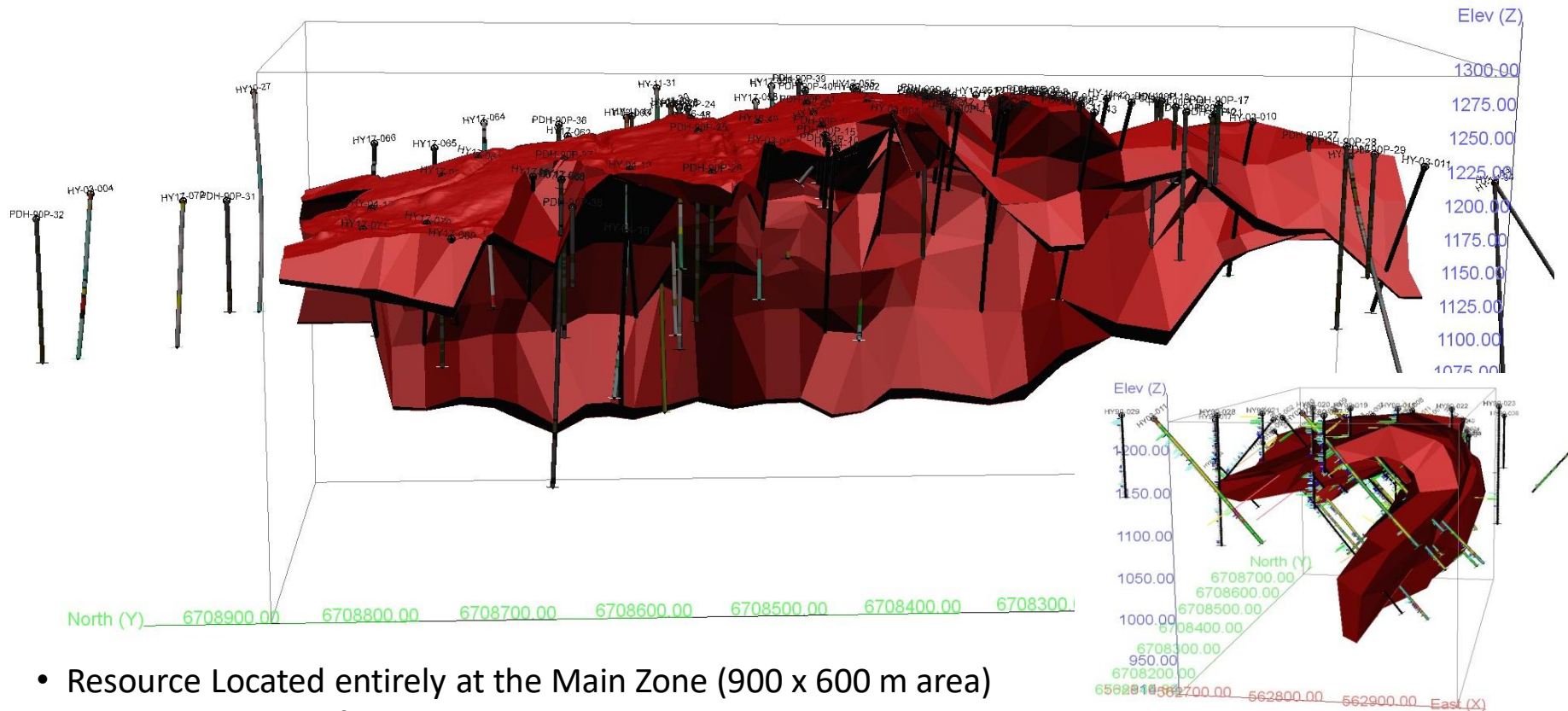
Alteration

1. Tourmaline \pm arsenopyrite-pyrite-silica
2. Pervasive iron carbonate + manganese

- Gold associated pyrite and tourmaline
 - Gold grain
 - Tourmaline
- Petrographic work is ongoing







- Resource Located entirely at the Main Zone (900 x 600 m area)
- Mineralization preferentially in quartzite units, open in all directions and at depth
- Bulk of resource is oxide within ~75 m of surface
- Mining method: Surface open pit
- Based on 71 drill holes (10,564 metres) and 14 trenches (2,014 metres) and includes 4,030 metres of new drill data (21 holes) from 2016 to 2017 and 617 metres of trenching (3 trenches)

HYLAND MAIN ZONE

Cut-off Grade (AuEq g/t)	In situ Tonnes	Au		Ag		AuEq	
		Grade (g/t)	Ozs	Grade (g/t)	Ozs	Grade (g/t)	Ozs
Indicated							
0.2	9,620,000	0.72	224,000	6.59	2,039,000	0.79	244,000
0.3*	8,637,000	0.78	216,000	7.04	1,954,000	0.85	236,000
0.4	7,326,000	0.86	203,000	7.71	1,816,000	0.94	222,000
0.5	6,120,000	0.95	187,000	8.36	1,645,000	1.04	204,000
0.6	5,027,000	1.05	169,000	9.03	1,459,000	1.14	185,000
Inferred							
0.2	11,357,000	0.74	270,000	5.15	1,881,000	0.8	293,000
0.3*	10,784,000	0.77	266,000	5.32	1,845,000	0.83	288,000
0.4	9,390,000	0.83	251,000	5.61	1,693,000	0.9	272,000
0.5	8,143,000	0.9	235,000	5.97	1,563,000	0.97	254,000
0.6	7,084,000	0.95	217,000	6.33	1,442,000	1.03	235,000

*Mineral resources are reported at a cut-off grade of 0.3 g/t AuEq. AuEq grade is based on \$1,350.00/oz Au, \$17.00/oz Ag and assumes a 100% recovery. Resource from March 22, 2018 Banyan Gold Press release. Resource calculated by Allan Armitage, P.Geol.

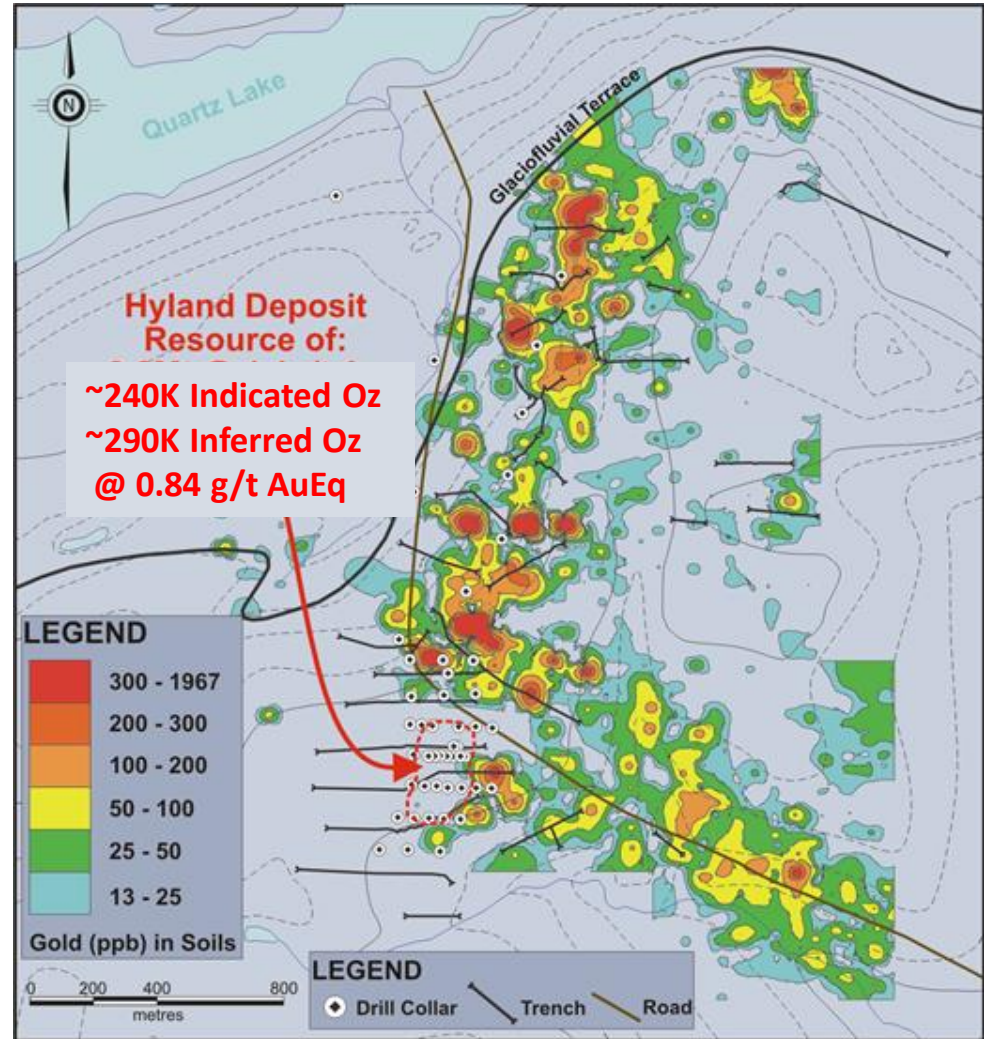
Multiple structural zones controlling Gold mineralization

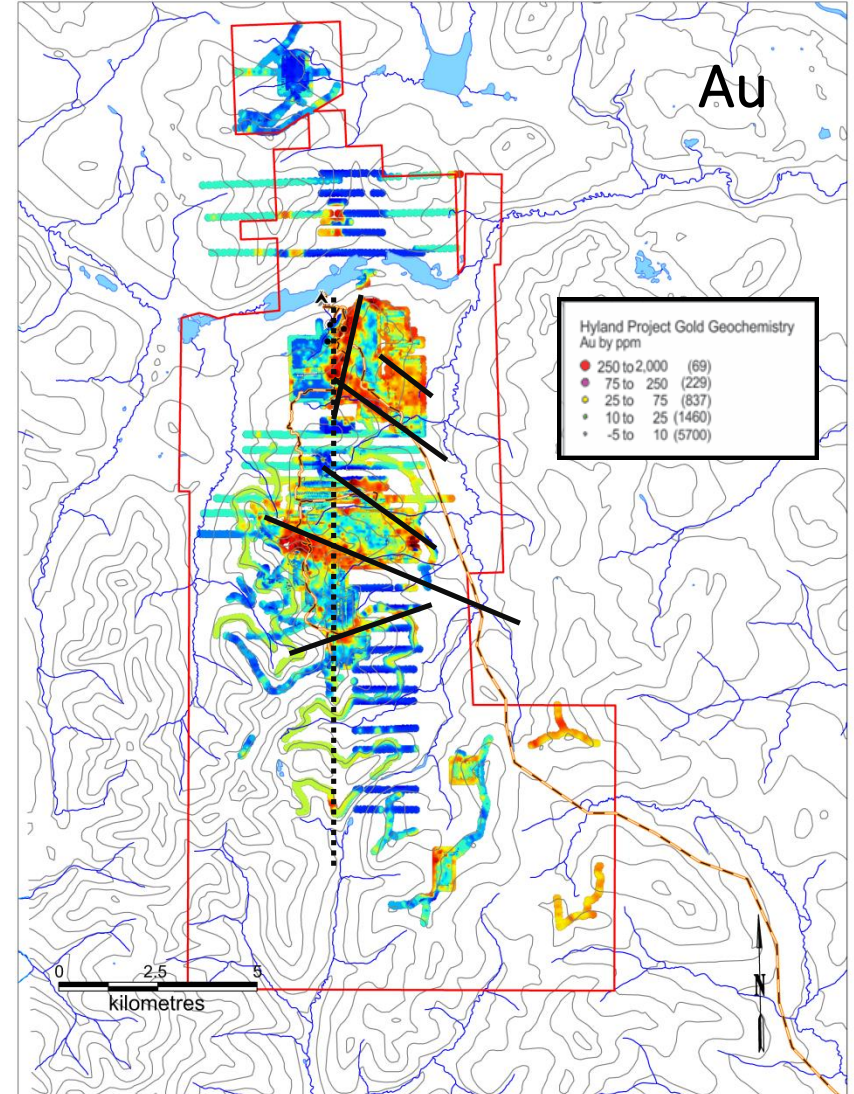
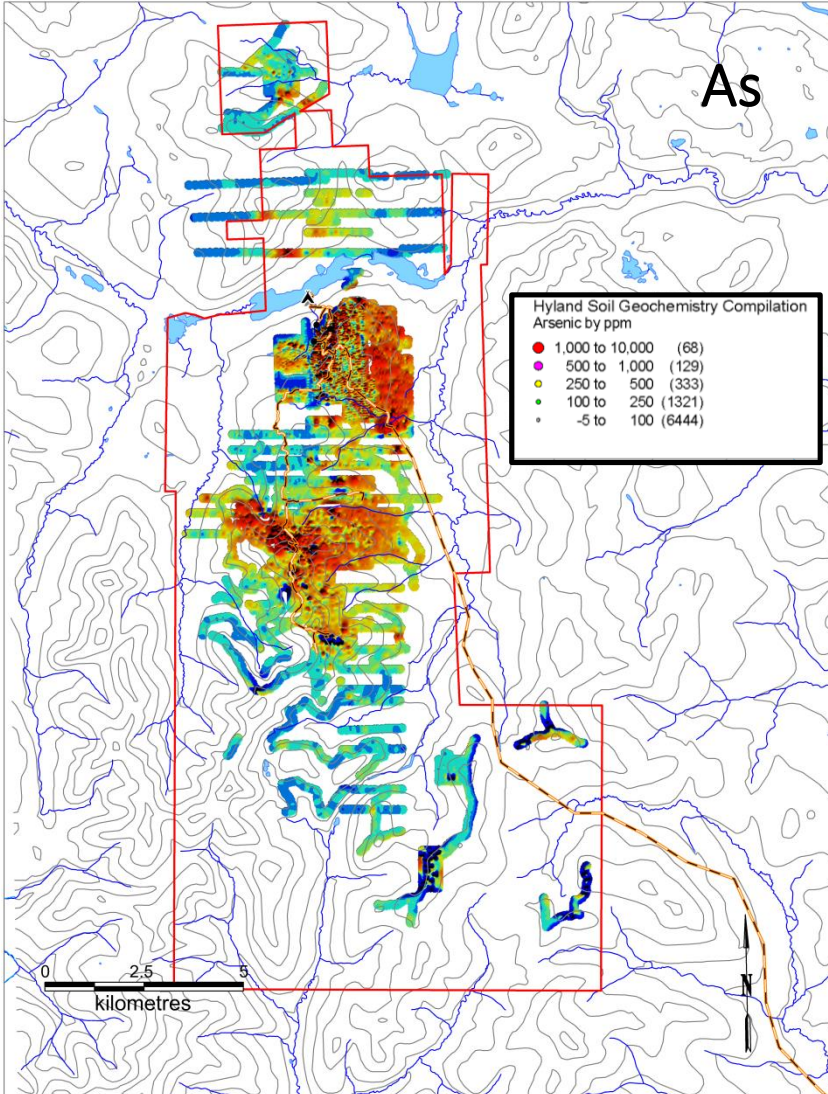
Main Zone exists at Intersection of 2 major Structural trends

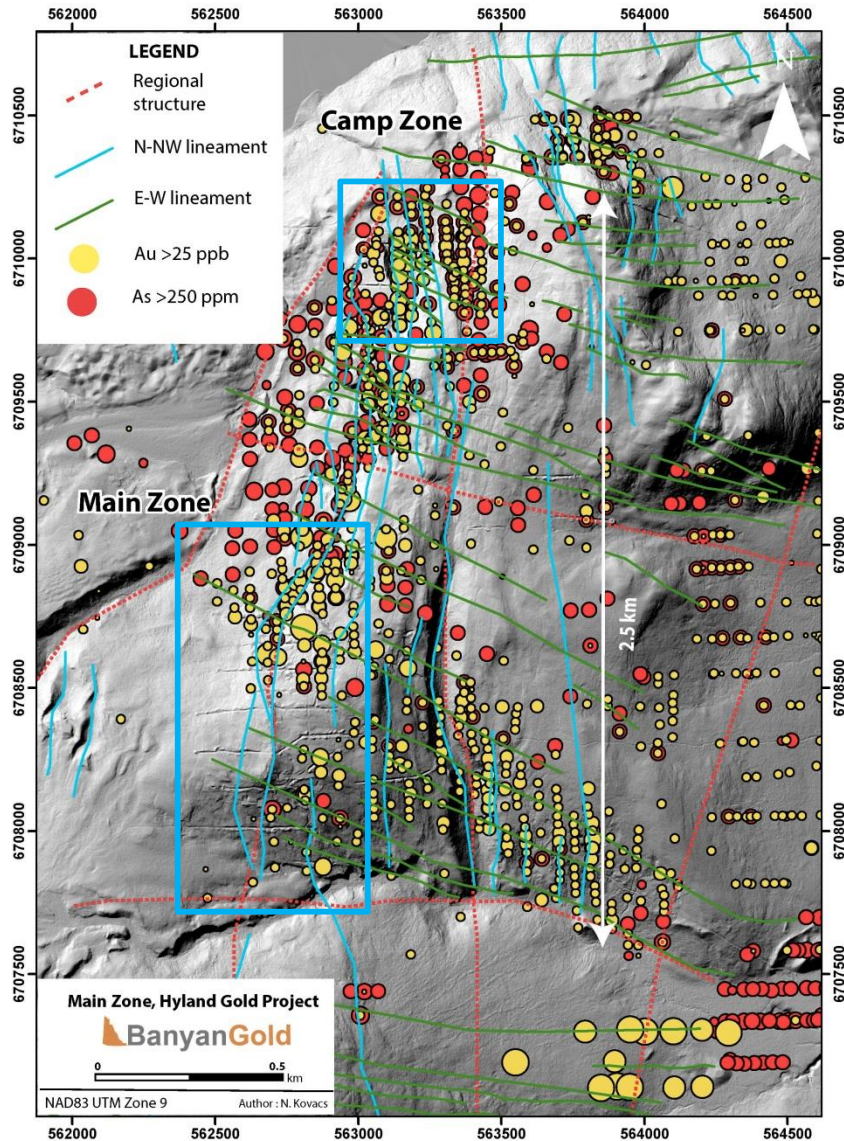
Structural targets (as defined by Gold/Arsenic-in-soils)

Level 1 Exploration Targets

Interpretation allows for multiple “Main Zone” Style targets exist on Property

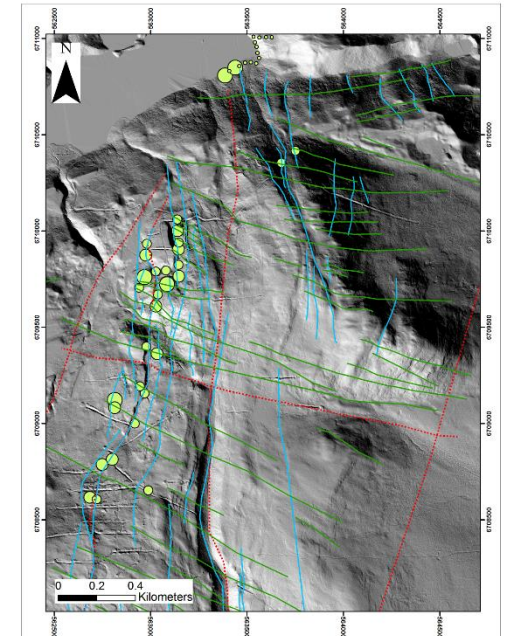






- Mineralization is structurally controlled
- NNW-trending lineament is mineralized (2nd order control)
 - Highest Au is in the intersection of N (1st order control) and NNW-trending faults
 - Gold and Arsenic coincident anomalies

Bi strong
pathfinder 1:1
Correlation
NNW-trending
faults

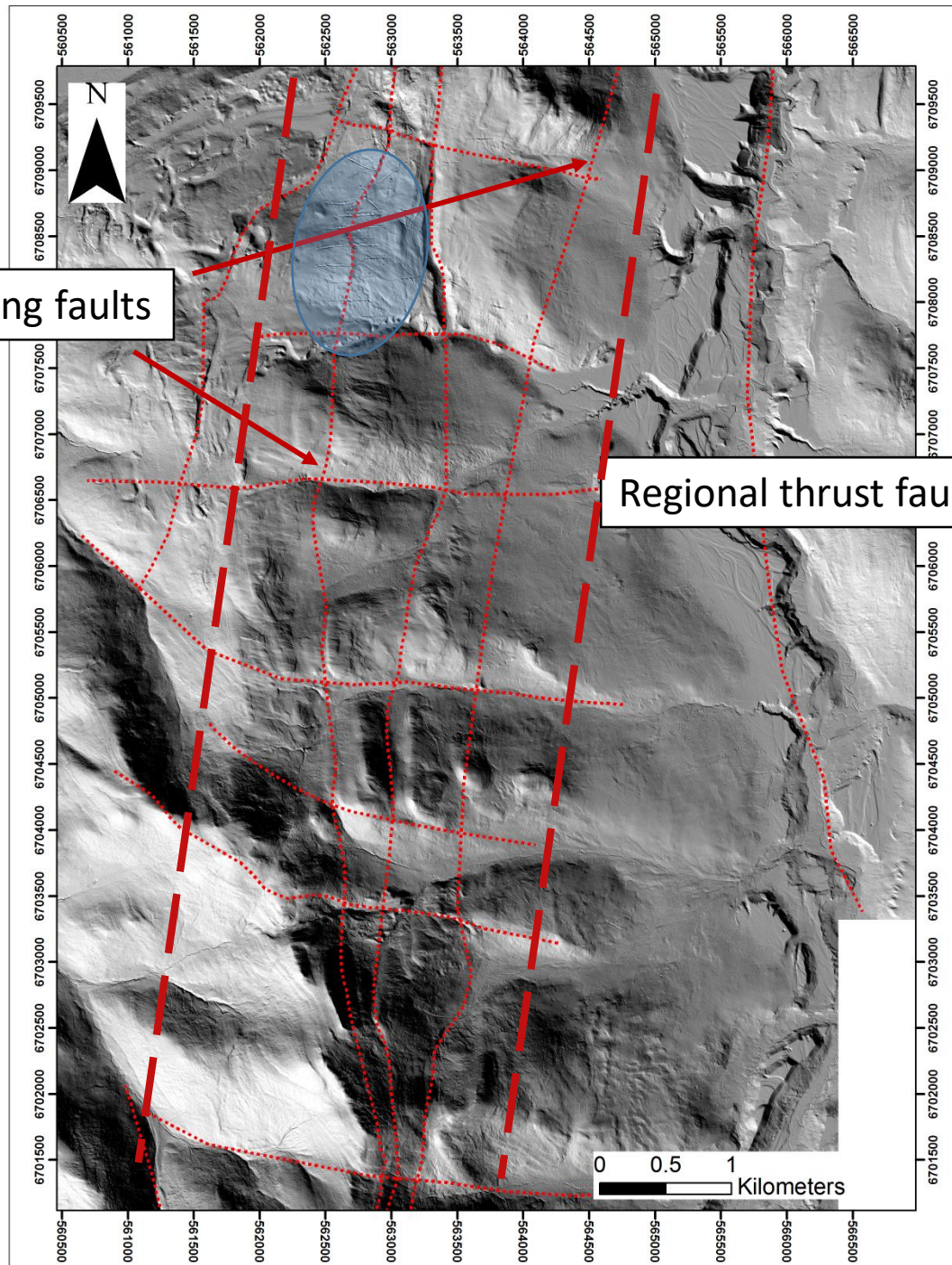


Regional bounding faults

Main Zone

N-S trending structural corridor

Regional thrust fault

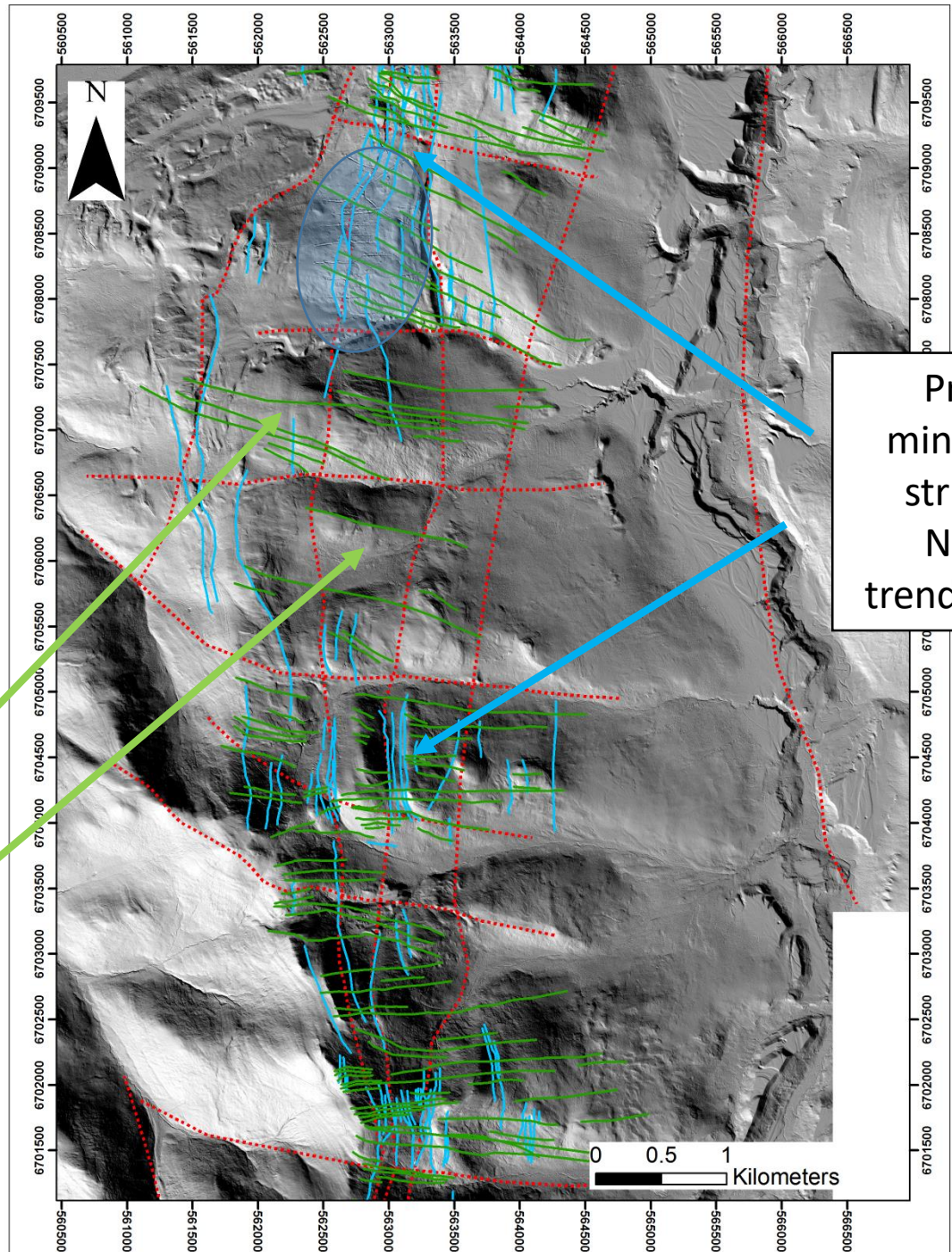


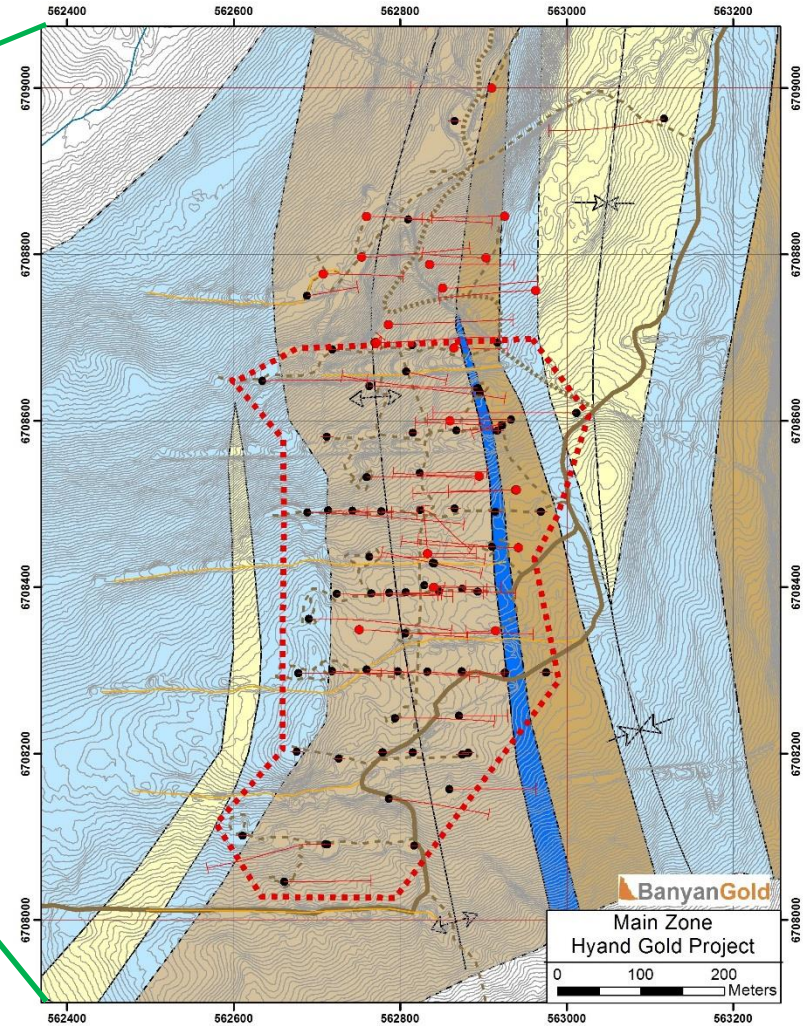
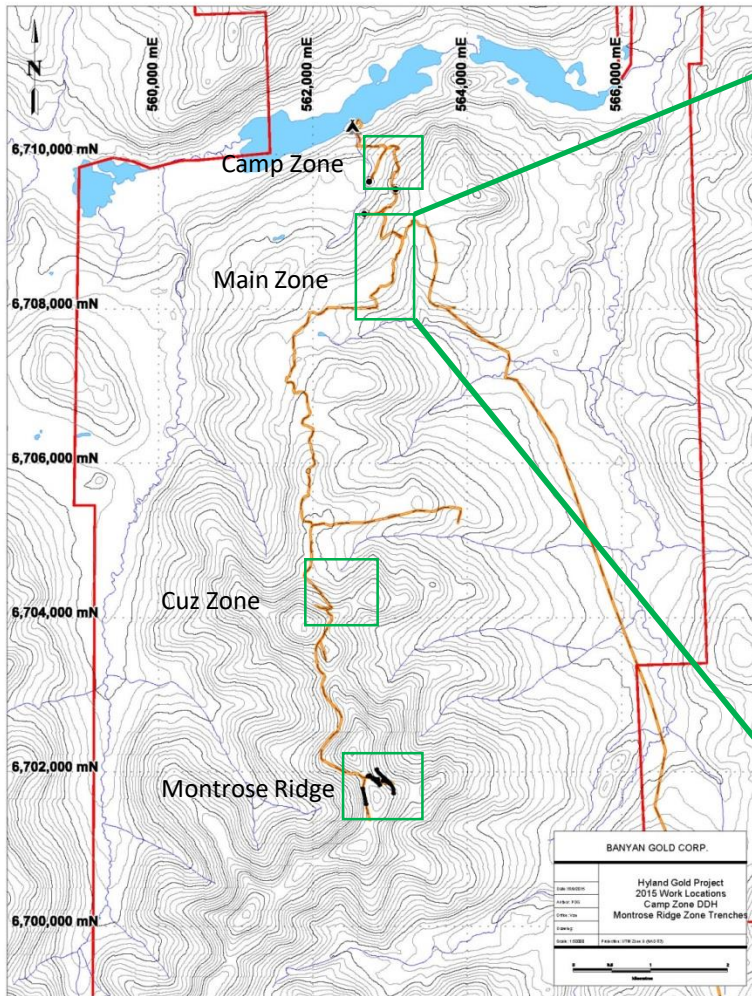
Main Zone
Cuz
Montrose

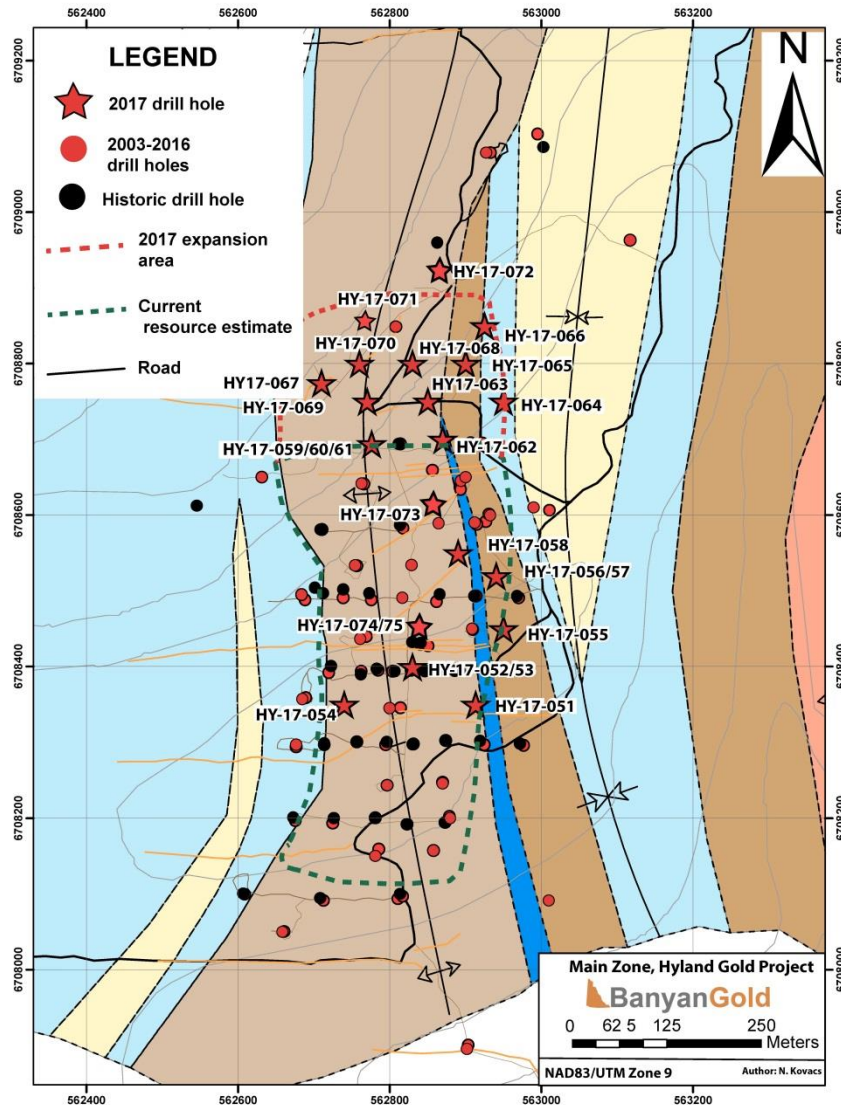
Secondary
mineralizing
structures
E-W trending faults

Primary
mineralizing
structures
N-NNW
trending faults

Deposit-scale faults







Strategy: Increase the Inferred Resource and Develop New Targets

- ✓ LIDAR analysis (structure)
- ✓ Geochemical soil survey : Hyland South & new targets
- ✓ Diamond drilling (25 holes ~ 3,850m) highlights include:

HY17-054:	36.24m of 1.3g/t Au and 2.54g/t Ag
HY17-055:	57.4m of 0.9g/t Au and 3.3g/t Ag
HY17-056:	94.6m of 0.7g/t Au and 7.0g/t Ag
HY17-057:	46.0m of 1.6g/t Au and 6.5g/t Ag

- ✓ Metallurgical test work – average oxide gold recoveries 86%
- ✓ Trenches – extended Main Zone at surface
 - TR17-04: 116m of 1.19g/t Au and 13.16g/t Ag
 - TR17-02: 56m of 1.42g/t Au and 3.94g/t Ag

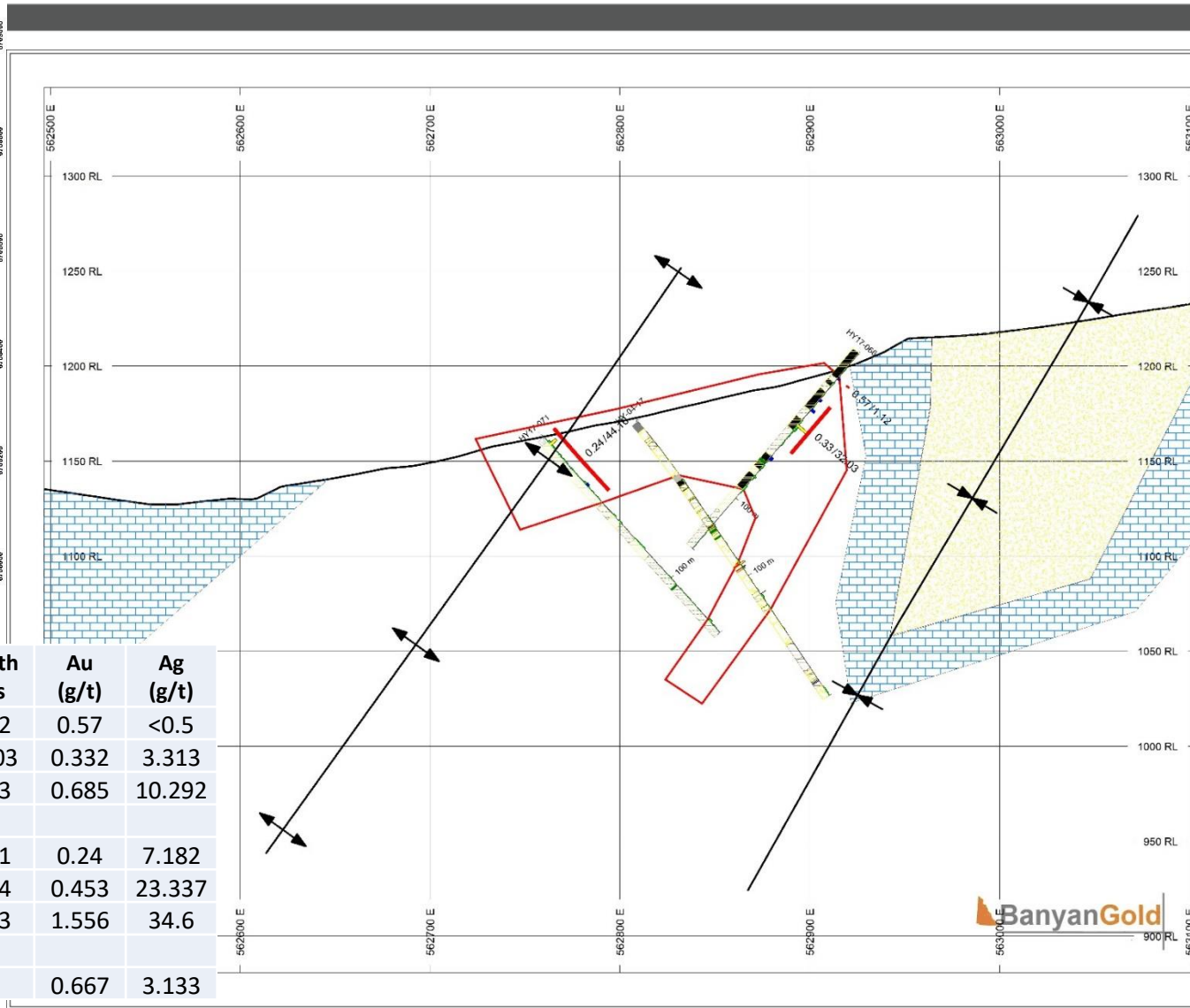
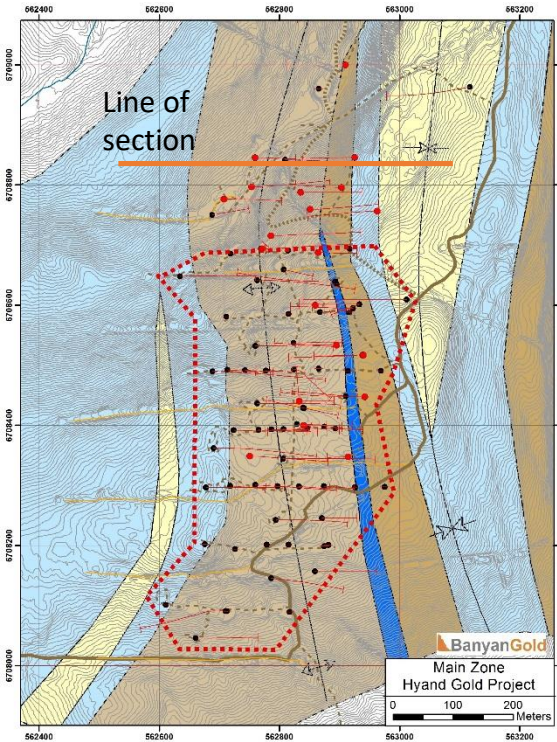
- ✓ Geological and Structural mapping
- ✓ On-going Petrographic work

- **Extending Main Zone mineralization**

- results indicate zone extends 300m north from previous resource area

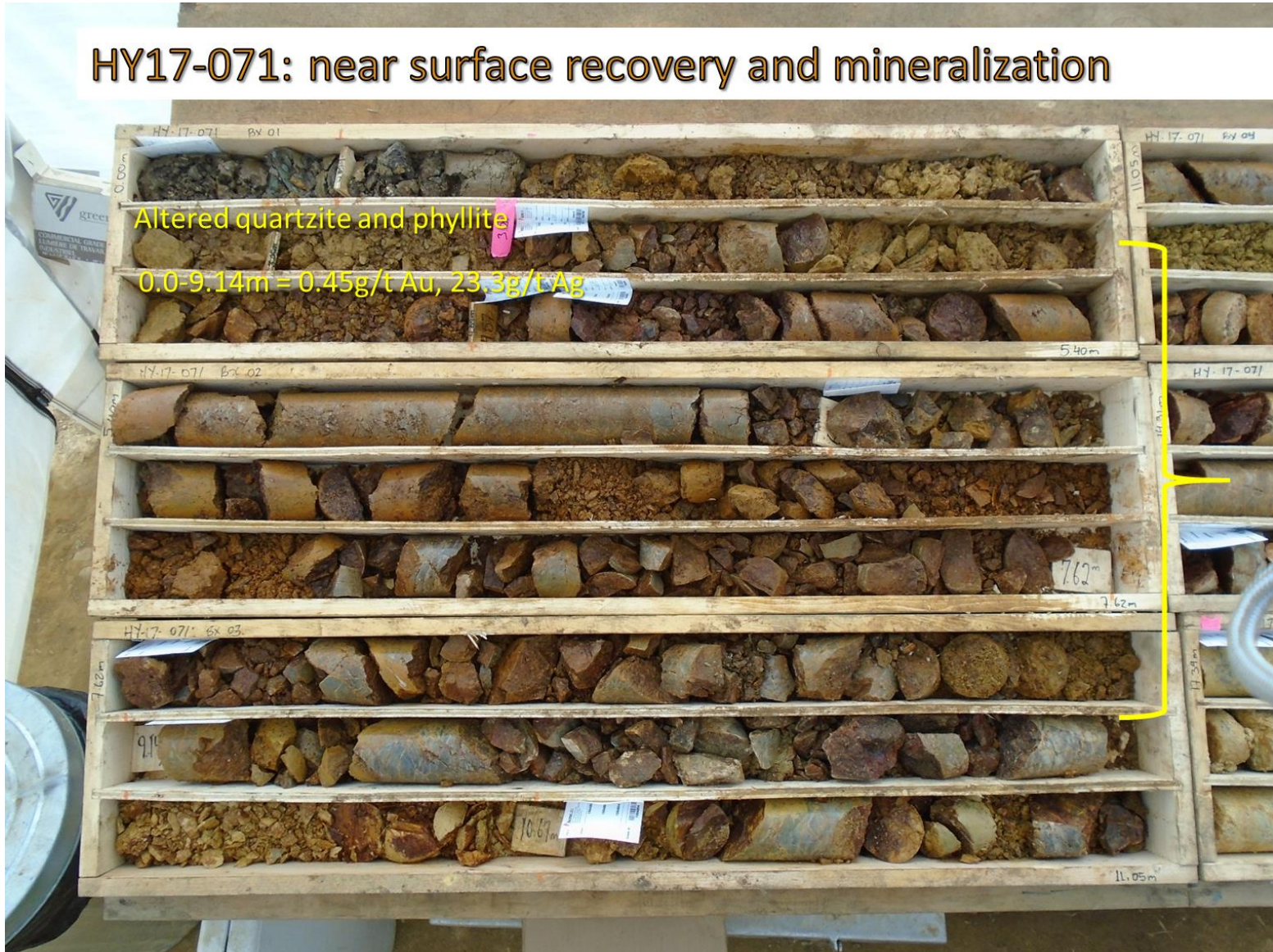
- including 32.0 meters of 0.33 g/t gold in HY17-066 located 150m north of the previous resource

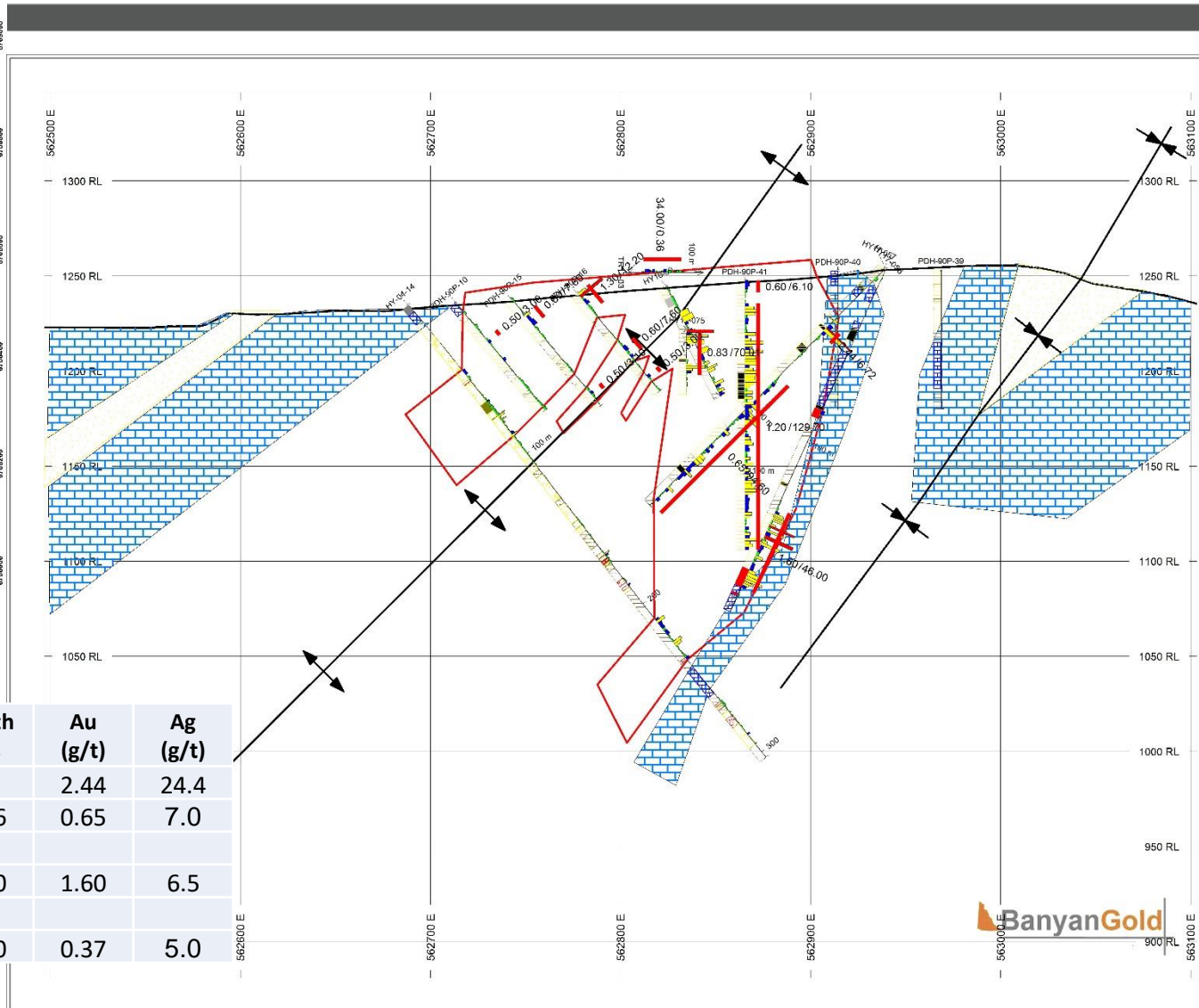
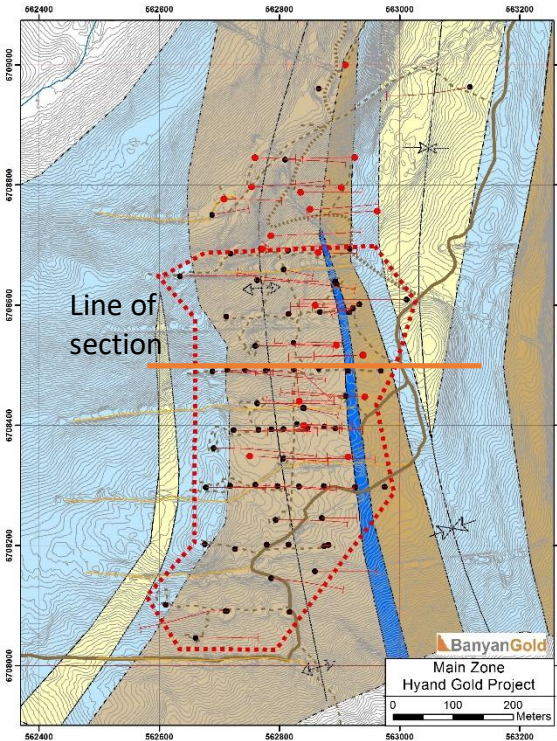
Hole	From (m)	To (m)	Width (m)	Gold (g/t)	Silver (g/t)
HY17-051	33.5	141.7	108.2	0.44	2.5
incl.	69.0	82.3	15.3	0.99	4.3
HY17-055	83.6	141.0	57.4	0.85	3.3
HY17-056	79.4	174.0	94.6	0.65	7.0
HY17-057	138.0	184.0	46.0	1.60	6.5
HY17-058	117.0	131.1	14.1	0.87	2.1
HY17-062	23.4	102.7	79.3	0.69	5.2
HY17-063	128.5	132.7	4.2	0.84	9.1
incl.	131.0	132.7	1.7	1.76	21.0
HY17-065	33.2	87.1	53.9	0.93	6.0
HY17-066	31.4	63.4	32.0	0.33	3.3
incl.	46.1	54.9	8.8	0.69	10.3
HY17-067	161.4	200.1	38.0	1.18	3.9
HY17-068	0	66.6	66.6	0.73	6.1
HY17-070	0	39.0	39.0	0.41	5.1
HY17-071	0	9.1	9.1	0.45	23.3
HY17-072	88.6	102.6	14.0	0.36	0.1



Hole #	Comment	From m's	To m's	Width m's	Au (g/t)	Ag (g/t)
HY17-066		16.76	17.88	1.12	0.57	<0.5
		31.4	63.43	32.03	0.332	3.313
	incl.	46.13	54.86	8.73	0.685	10.292
HY17-071		0	44.1	44.1	0.24	7.182
	incl.	0	9.14	9.14	0.453	23.337
	which incl.	4.57	6.1	1.53	1.556	34.6
TR17-06a		0	6	6	0.667	3.133

HY17-071: near surface recovery and mineralization





Hole #	Comment	From m's	To m's	Width m's	Au (g/t)	Ag (g/t)
HY17-056		41.0	47.7	6.7	2.44	24.4
		79.4	174.0	94.6	0.65	7.0
HY17-057		138.0	184.0	46.0	1.60	6.5
TR17-03		58.0	92.0	34.0	0.37	5.0

HY17-057: silicified zone



Quartz-sericite
altered quartzite

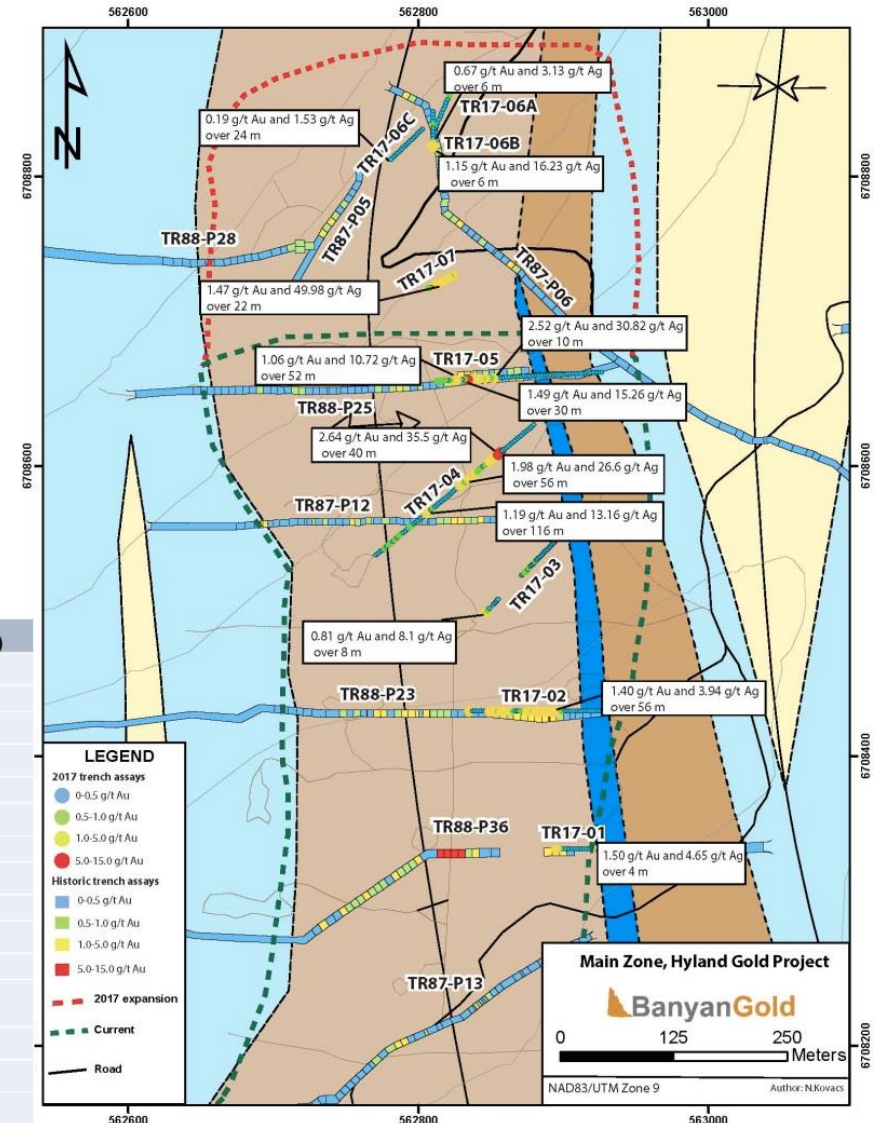
169.9-184.0m = 1.67g/t Au and 1.2g/t Ag

Massive sulphide

Main Zone Trench Results

- including 116.0 m of 1.19 g/t gold and 13.16 g/t silver
- 640m in seven trenches
- Two angle trenches provided valuable orientation information
- New trenches north of Main Zone show extension of mineralization

Trench_ID	From (m)	To (m)	Width (m)	Gold (g/t)	Silver (g/t)
TR17-02	14.0	70.0	56.0	1.40	3.94
TR17-04 and incl.	6.0 108.0	122.0 120.0	116.0 12.0	1.19 5.53	13.2 64.7
TR17-05	64.0	116.0	52.0	1.06	10.7
TR17-06b	8.0	24.0	16.0	0.685	15.1
TR17-07	0.0	22.0	22.0	1.47	50.0
Camp Zone					
CZ17-04	104.0	106.0	2.0	1.28	<0.005
	144.0	152.0	8.0	2.25	0.5
incl.	146.0	148.0	2.0	5.2	1.2





**TR17-04: 116-120m
11.9g/t Au and 54.7g/t Ag**

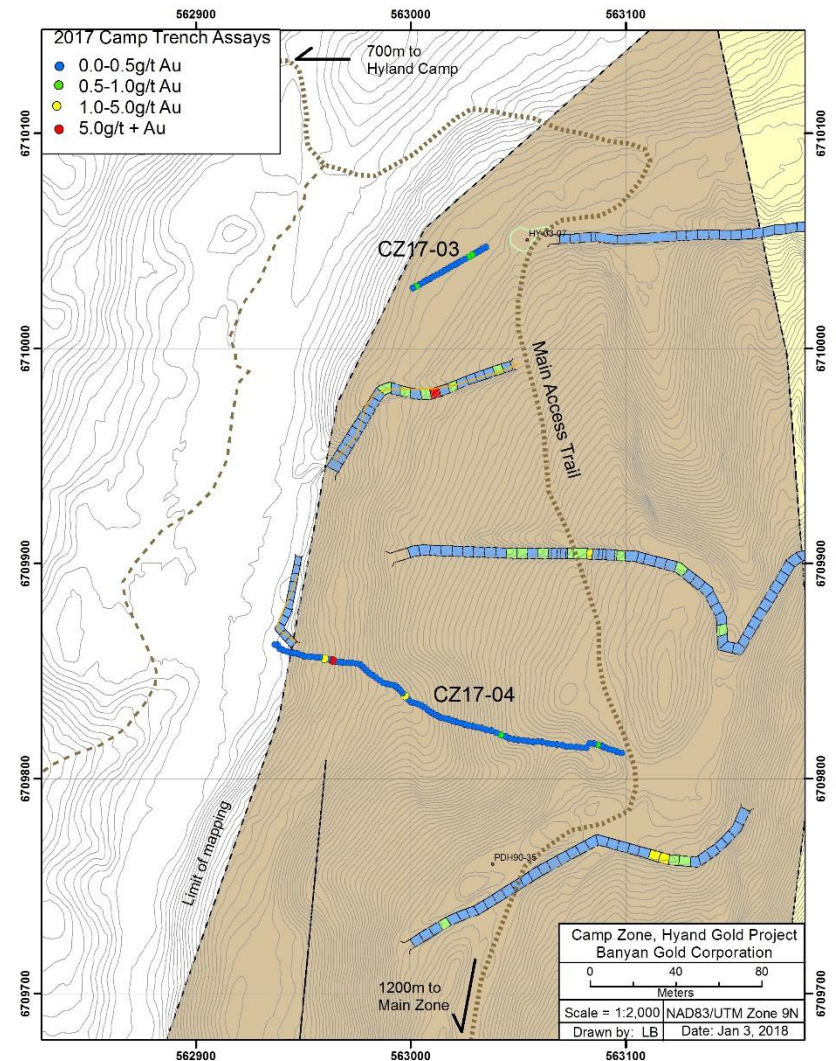
Average column leach oxide gold recoveries 86% at 12.5 mm crush size after 58 Days from dedicated holes (HY17-073 and HY17-074)

Description	Crush Size (mm)	Avg. Head Assay (gms Au/MT)	Extracted % Au after 58 Days	% Au Extracted Recovered after 7 days
HY-17-073M - Oxide	12.5	1.468	91%	87%
HY-17-074M - Oxide	12.5	0.391	80%	73%
Bulk - Oxide	12.5	1.872	86%	84%
		Average	86%	81%

KCA of Reno, NV Conducted 2017 Recovery test work

Follow up on Trench CZ-16-01 from the 2016 exploration program that returned 96 metres of 0.64 g/t Au from 0 to 96 metres, including **56 metres of 1.03 g/t Au from 0 to 56 metres**

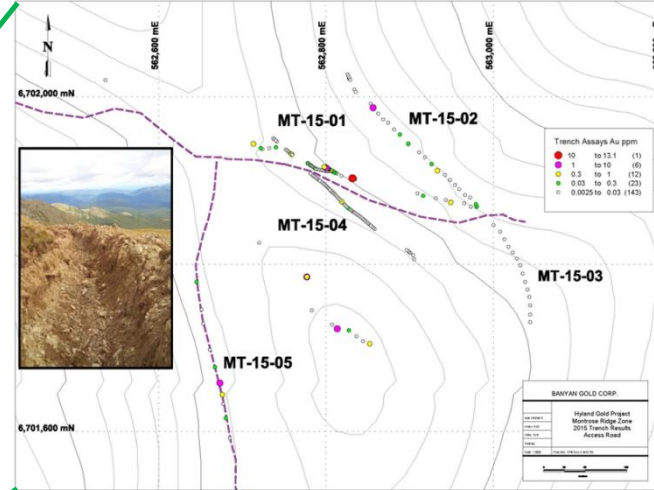
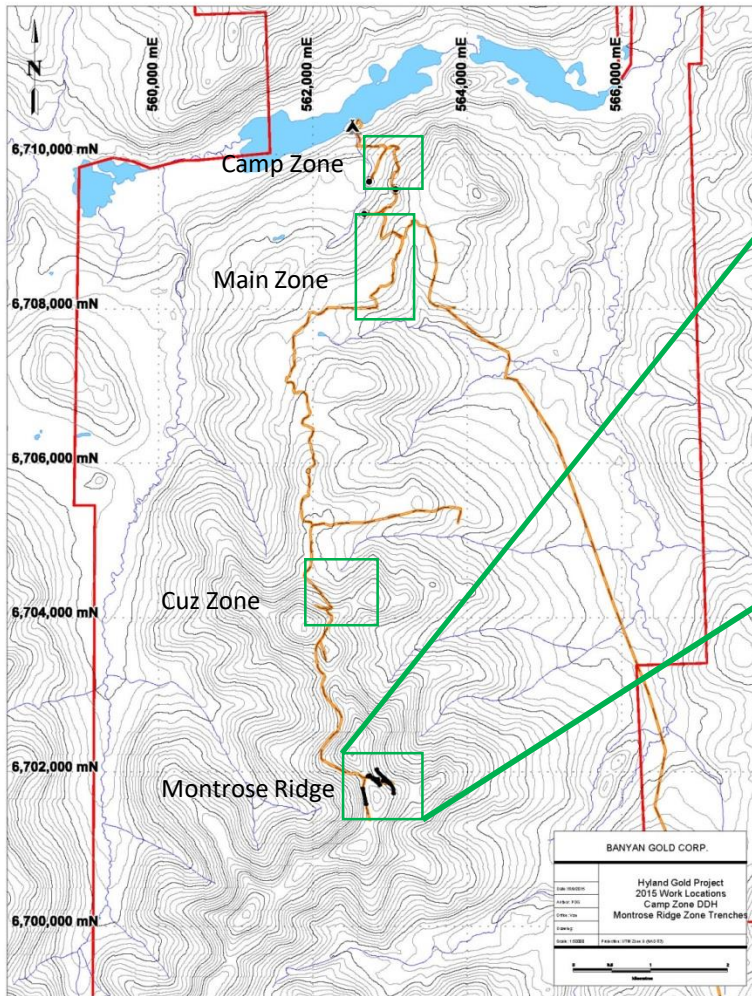
	From	To	Interval	Gold	Silver
CZ17-03	4.0	12.0	8.0	0.39	<0.005
CZ17-04	8.0	14.0	6.0	0.39	0.5
	104.0	106.0	2.0	1.28	<0.005
	144.0	152.0	8.0	2.25	0.5
incl.	146.0	148.0	2.0	5.2	1.2

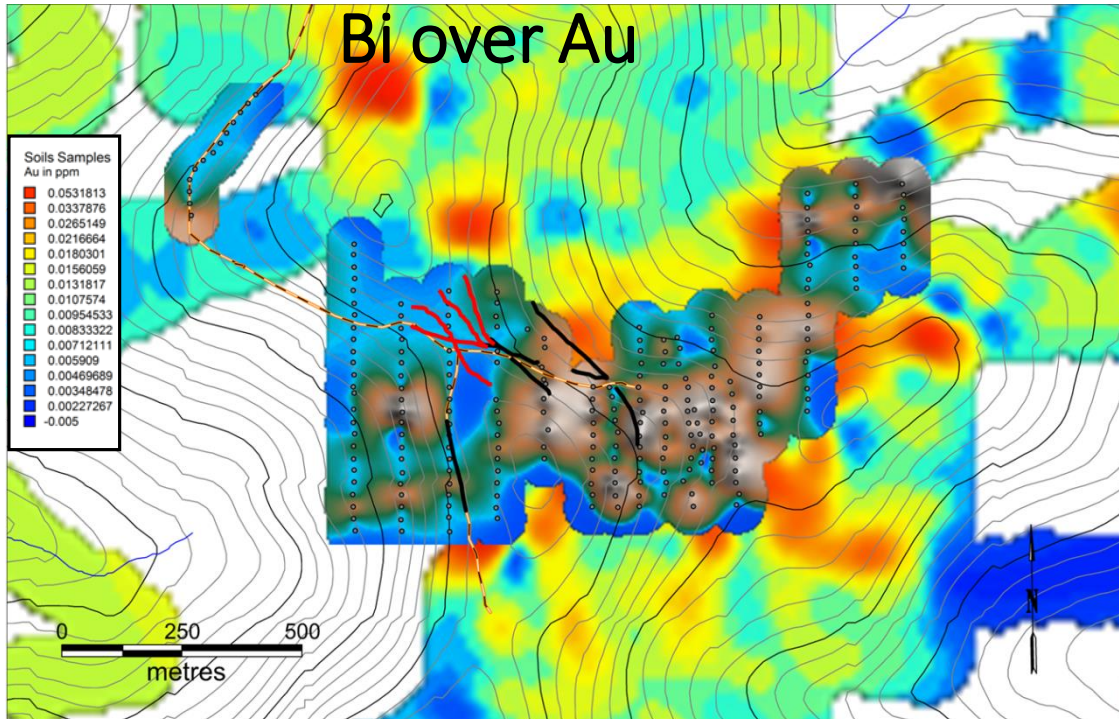


Carbonate Replacement Style Gold, Lead, Zinc and Copper mineralization:

Pyrite, Arsenopyrite, Pyrrhotite, Sphalerite, Galena, Bismuthinite and Native Cu







Trench MT-15-01: **6m of 4.4 g/t Au from 0-6m** in including **2m of 13.1 g/t Au from 4-6m** and **24 m of 0.47 g/t Au from 18 to 42m**, including **6m of 1.3 g/t Au from 36-42m**

Selected chip and channel samples: **2.25 g/t Au, 1.35 g/t Au, and 2.9 g/t Au.**

- 
- Hyland is a large under-explored regional-scale gold mineralized system
 - Sediment-hosted, structurally controlled gold-silver mineralized system with stockwork/veining, silica flood with boxwork texture, and replacement styles of mineralization – Large Polymetallic Mineralized System
 - Robust, expandable Main Zone NI 43-101 open-pit, heap leach amenable resource
 - Advancing project with multi-million Oz regional scale potential systematically along the Quartz Lake Lineament

Value Driven Acquisition, Discovery & Development



Head Office:

Suite 250 - 2237 2nd Avenue
Whitehorse, Yukon
Canada, Y1A 0K7

T: (888) 629-0444

F: (888) 629-0444

Email: info@banyangold.com

Website: www.BanyanGold.com



Twitter: BanyanGold



LinkedIn: Banyan-Gold-Corp